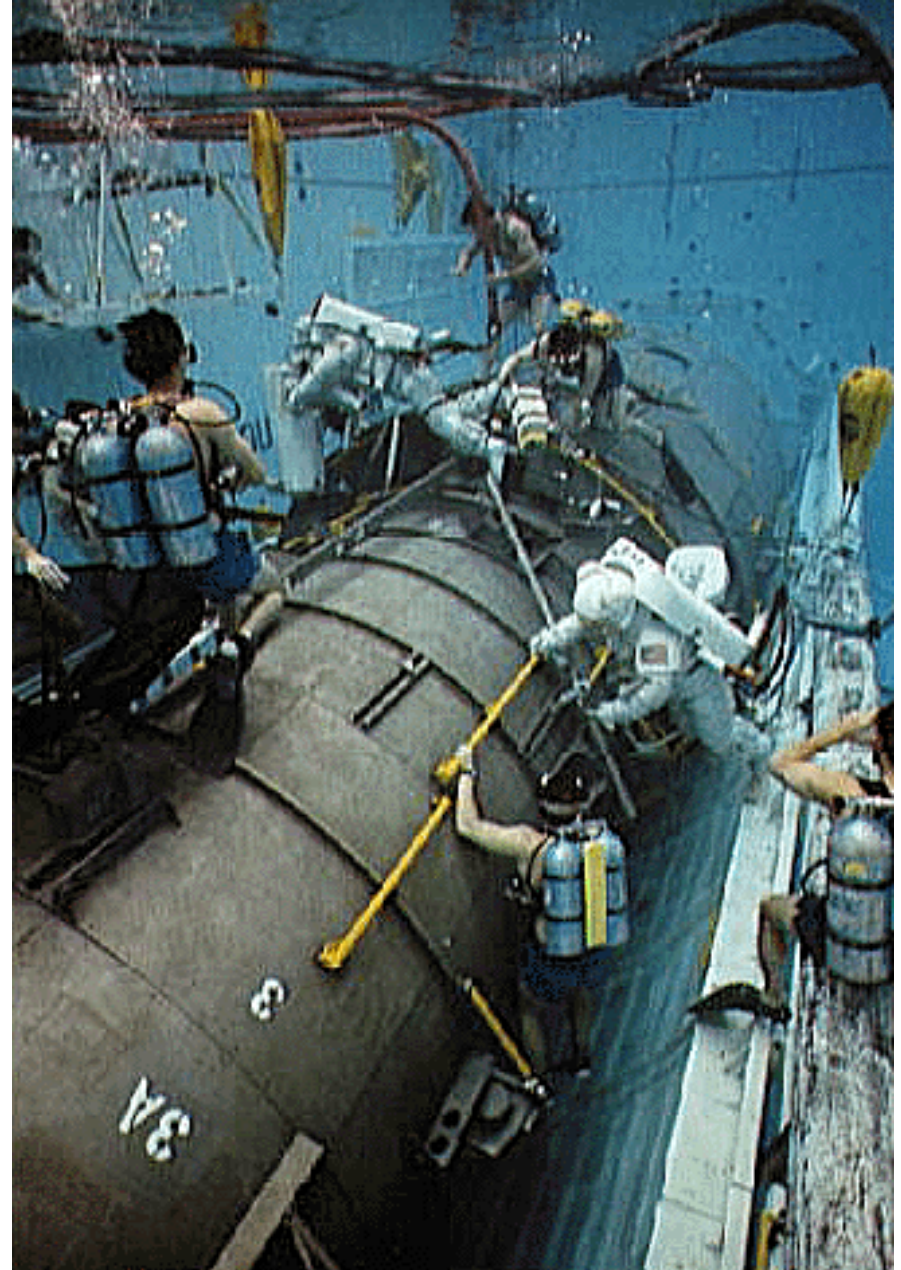


STARCHILD



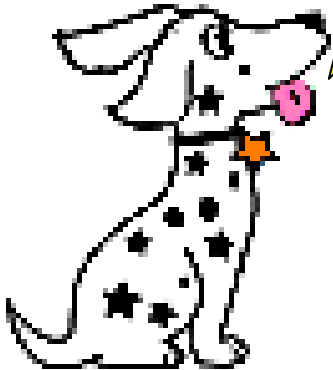
prepariamo il nostro
viaggio tra le stelle

**prima di partire
ci dobbiamo
addestrare**



lancio della Vostok 1

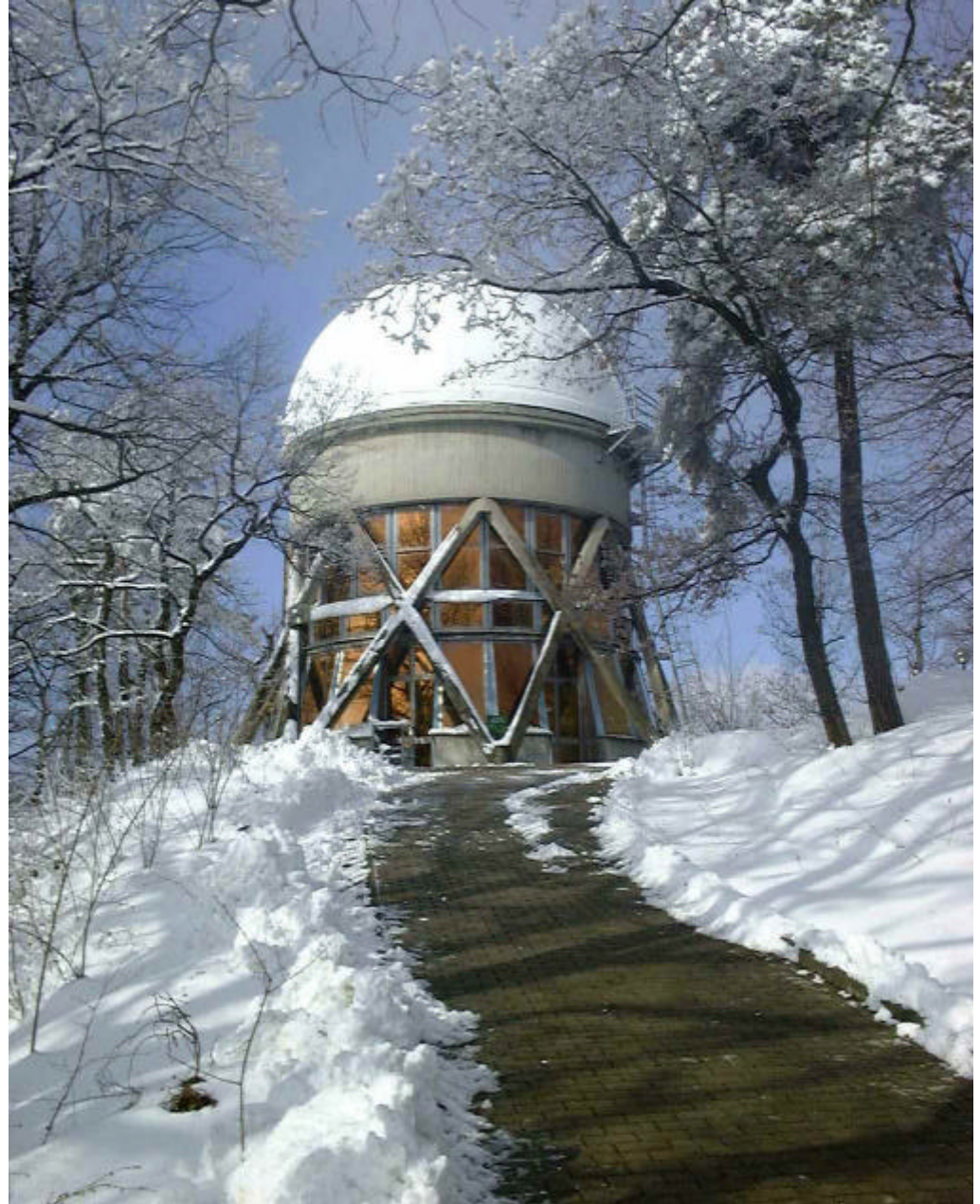
io devo
restare a
Terra





sullo
shuttle

**i nostri amici
possono
guardarci da
qui**

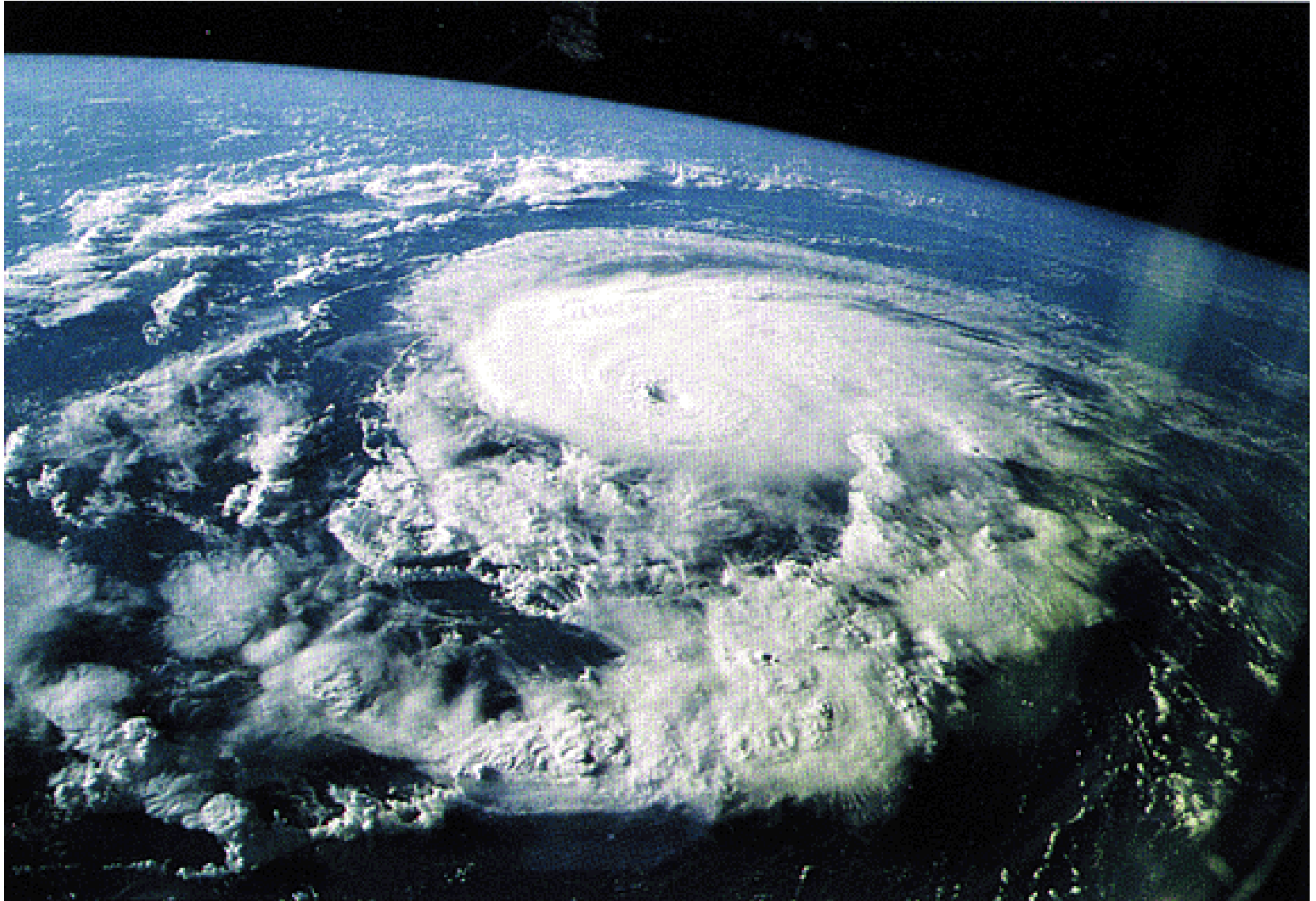


un arcobaleno ci dice buon viaggio

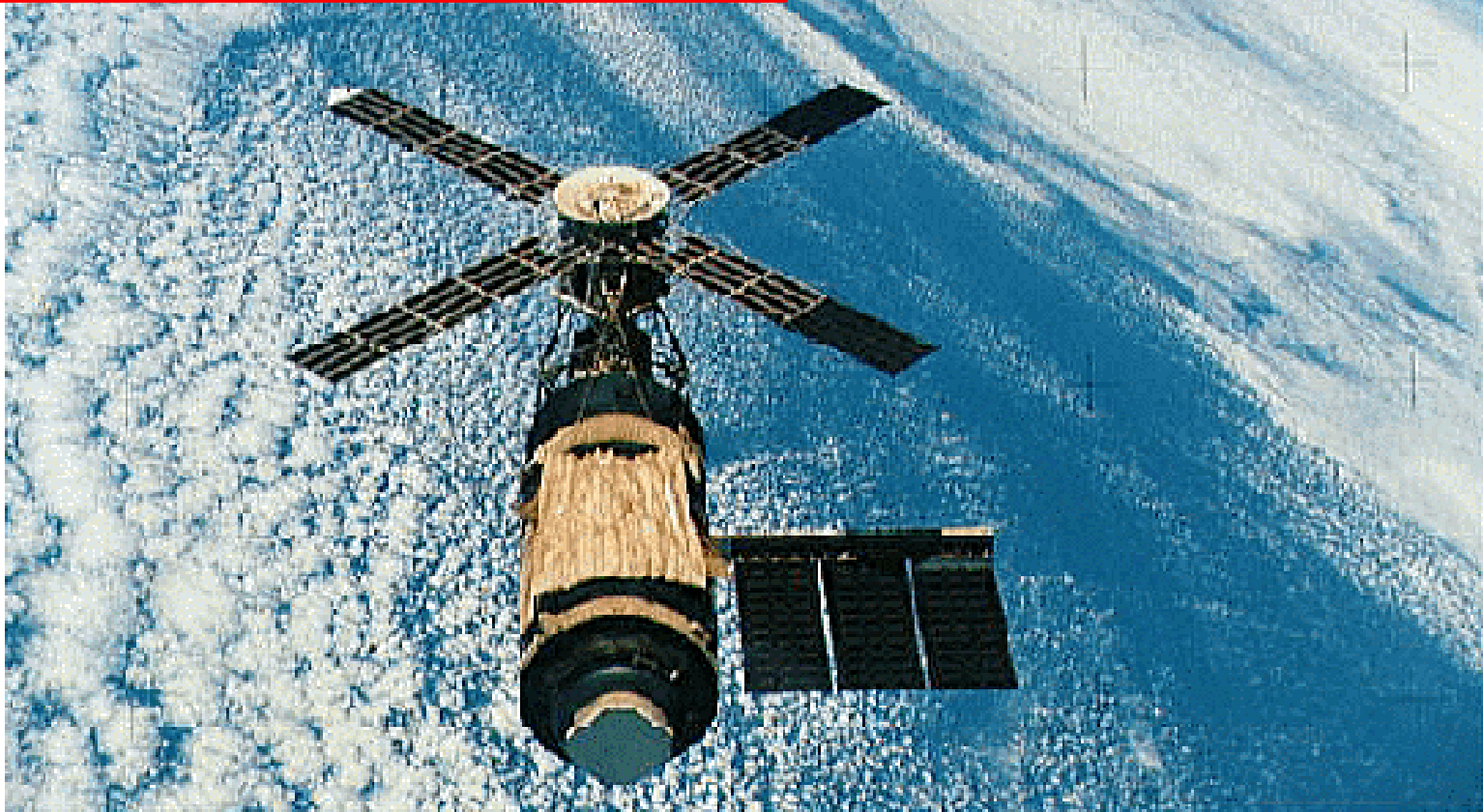


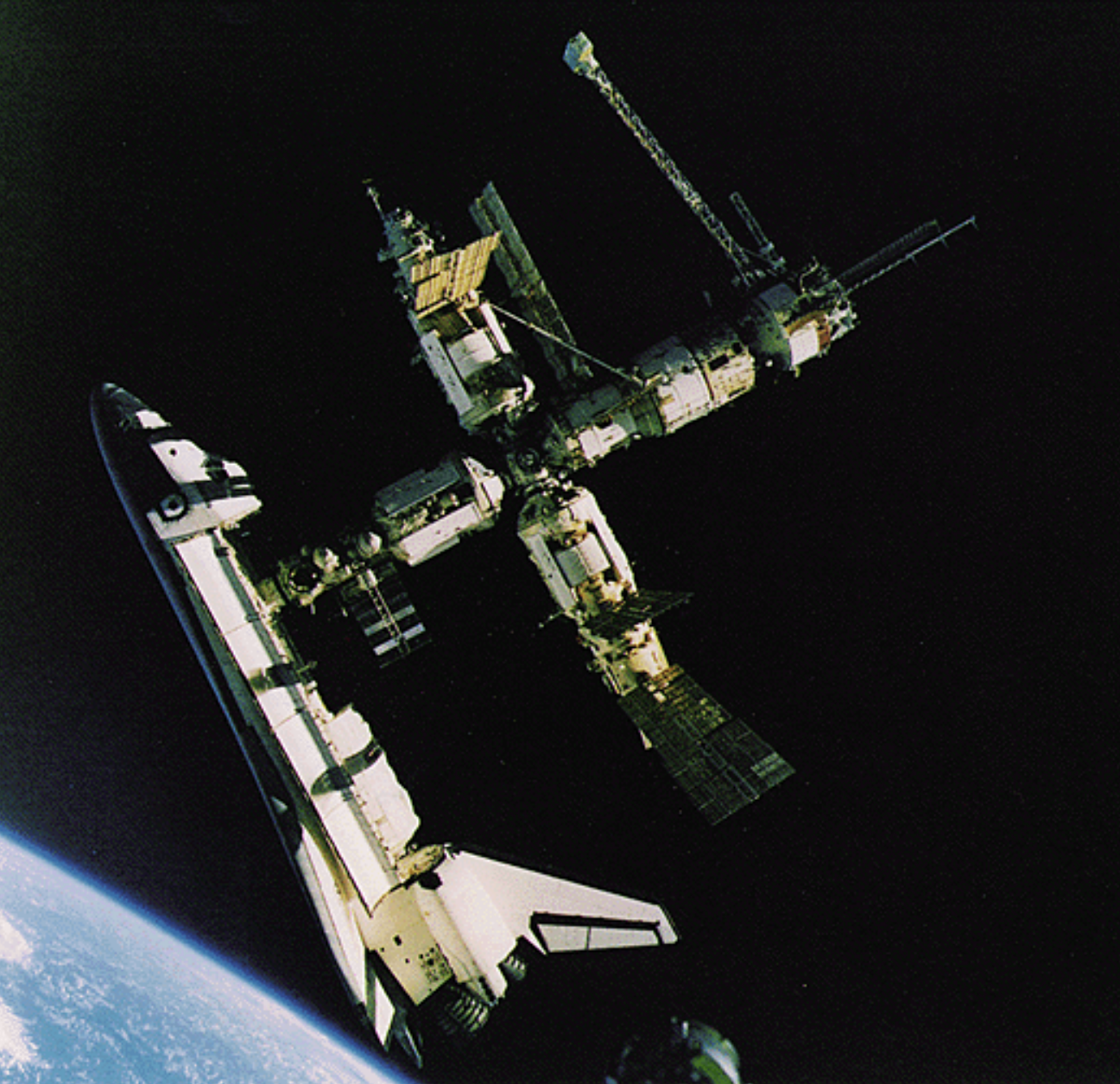
Sorvoliamo il mar mediterraneo tra Grecia e Turchia

e un uragano nei Caraibi



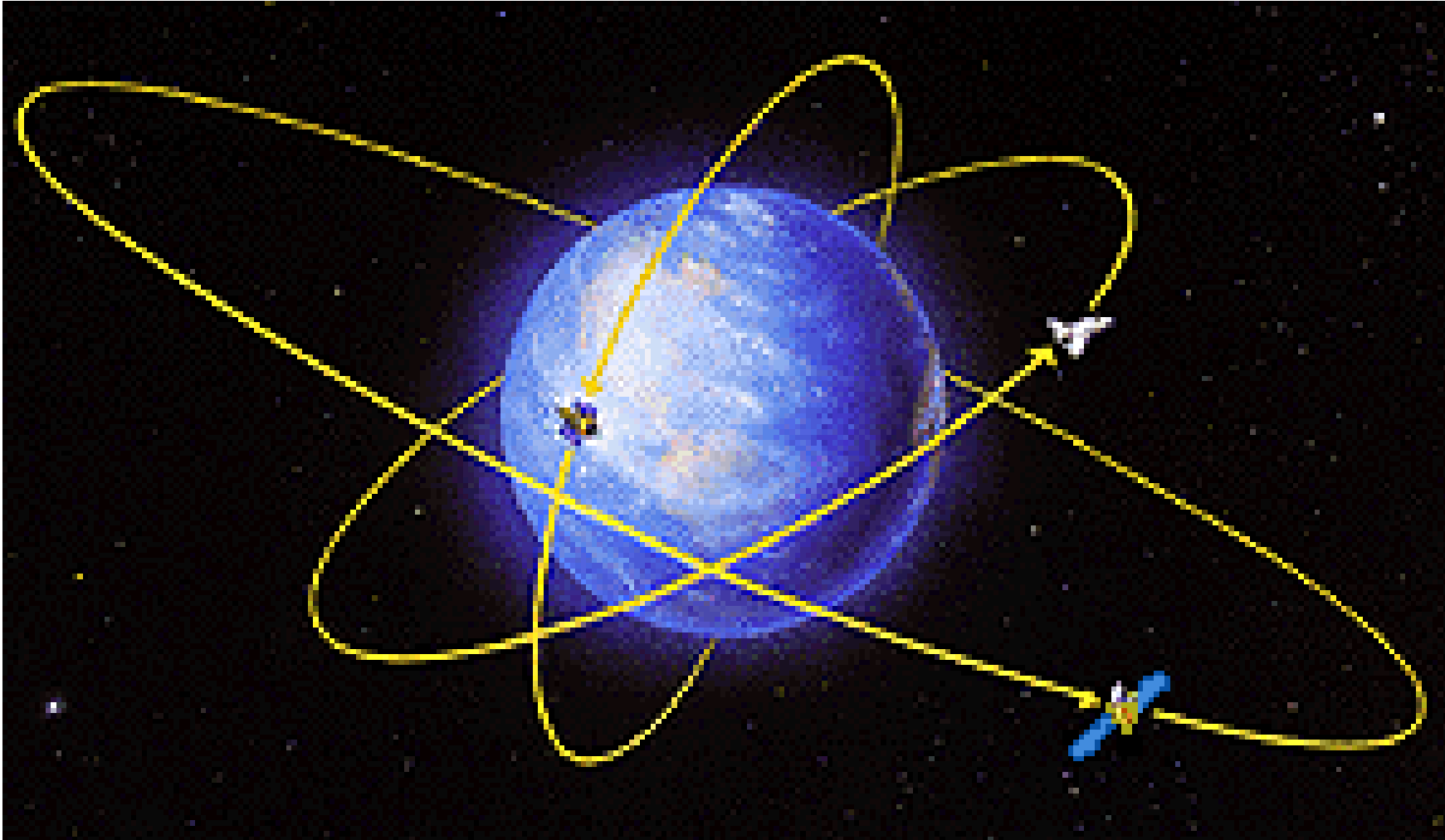
**ecco i nostri amici
che ci aspettano
sullo Skylab**



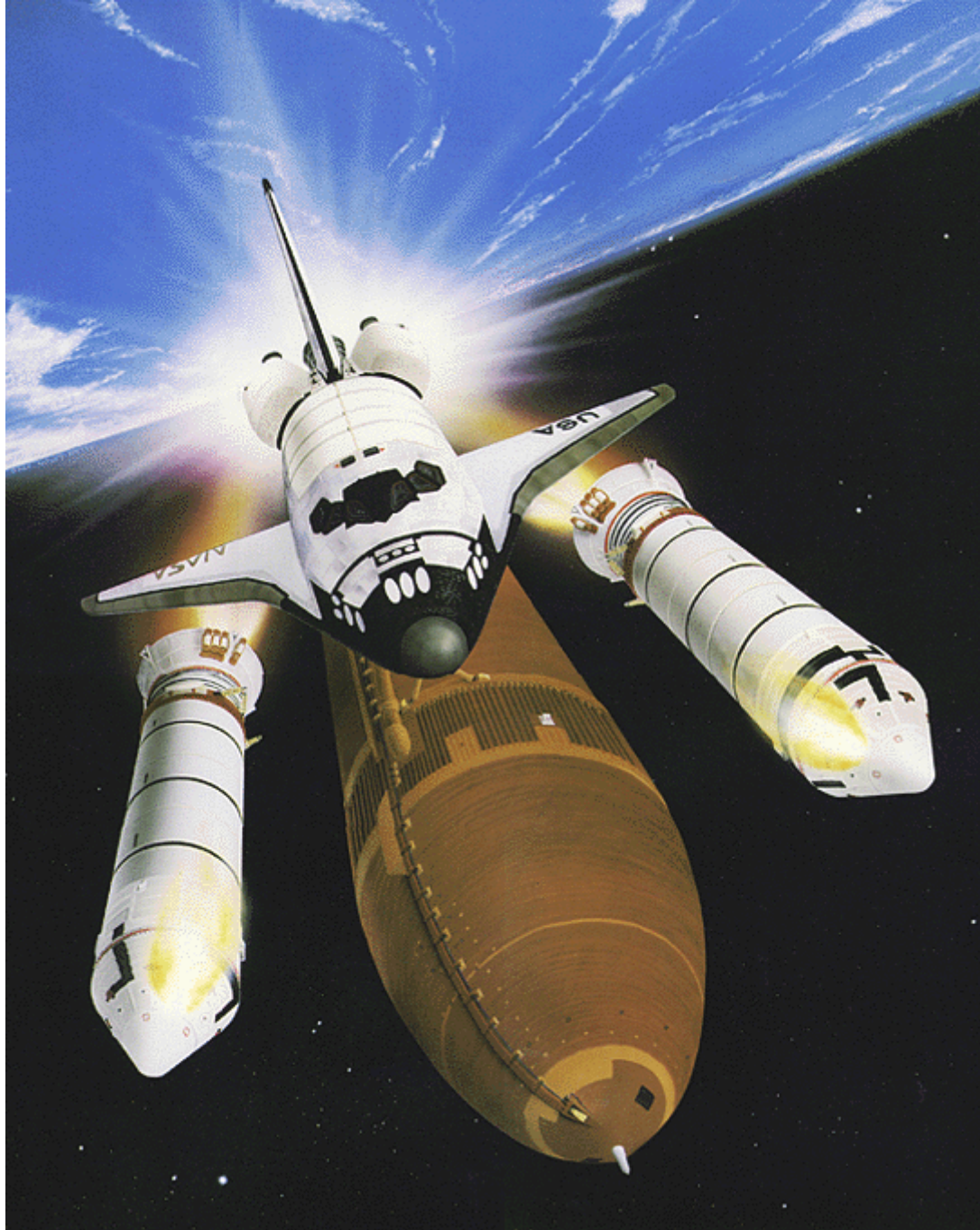


**una sosta
prima di
ripartire**

prendiamo la rincorsa e..... **via!**



**Ciao
siamo partiti**



ecco la
Terra
colorata



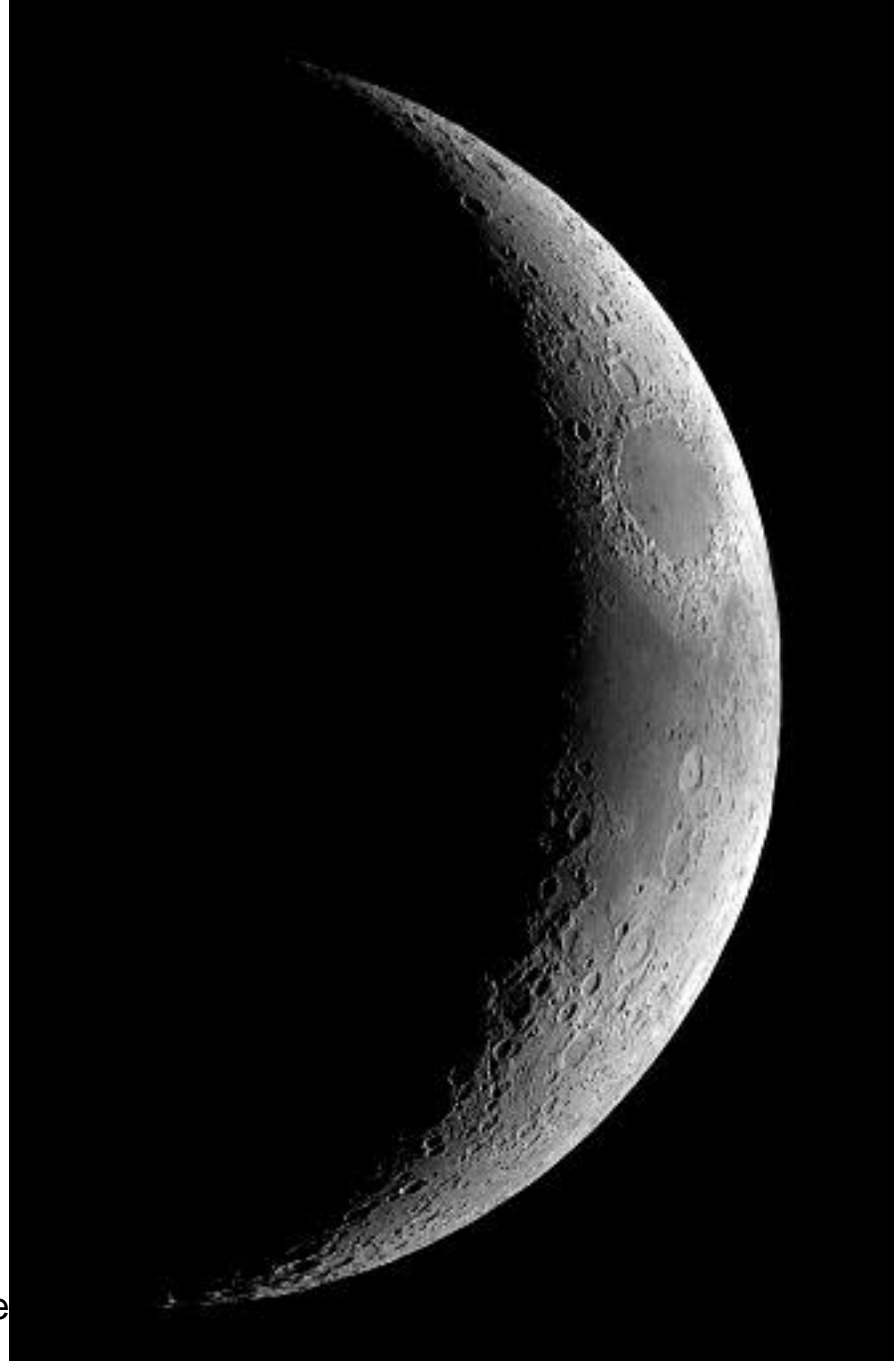
**ancora
la Terra**



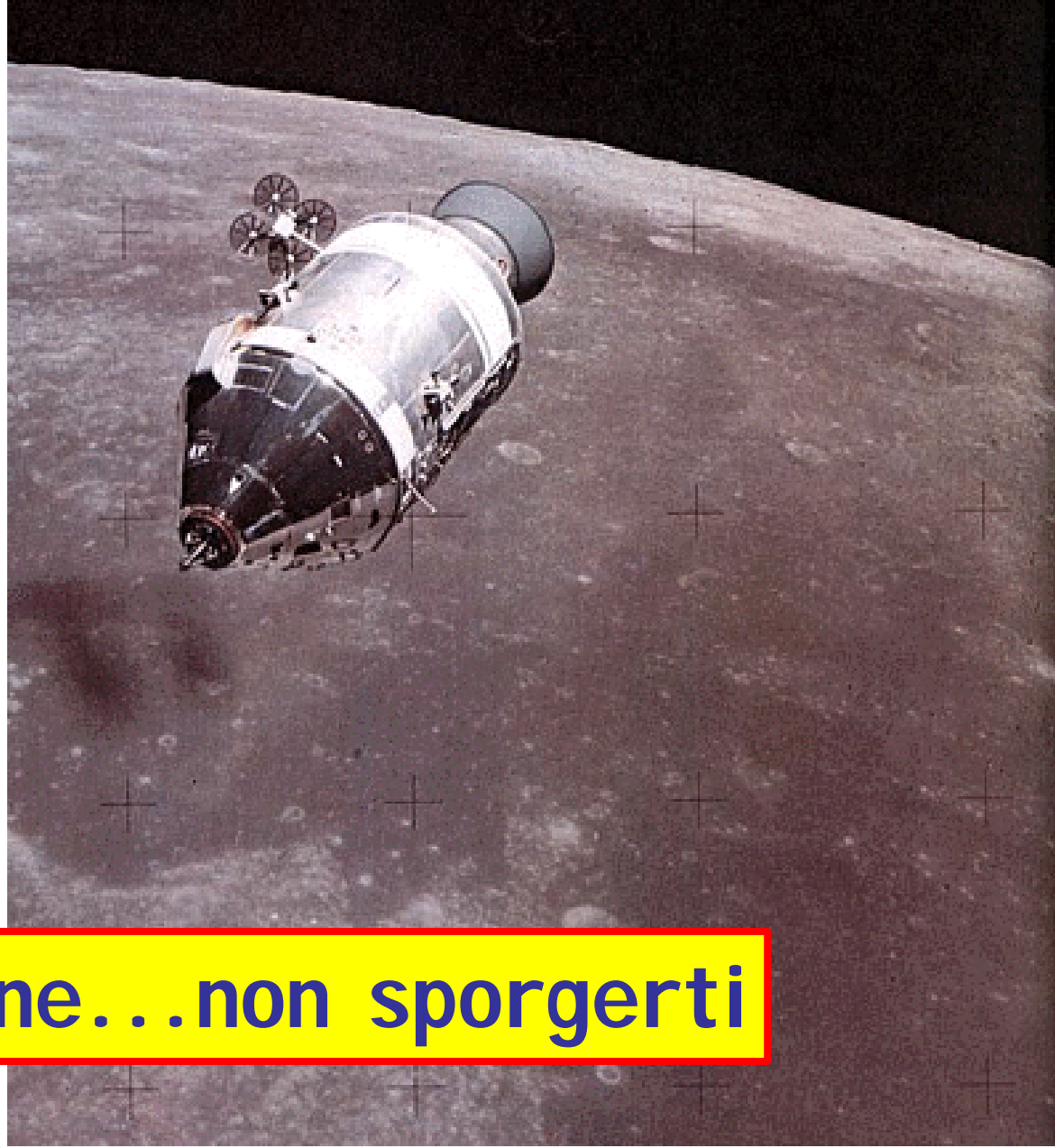
ecco la Luna



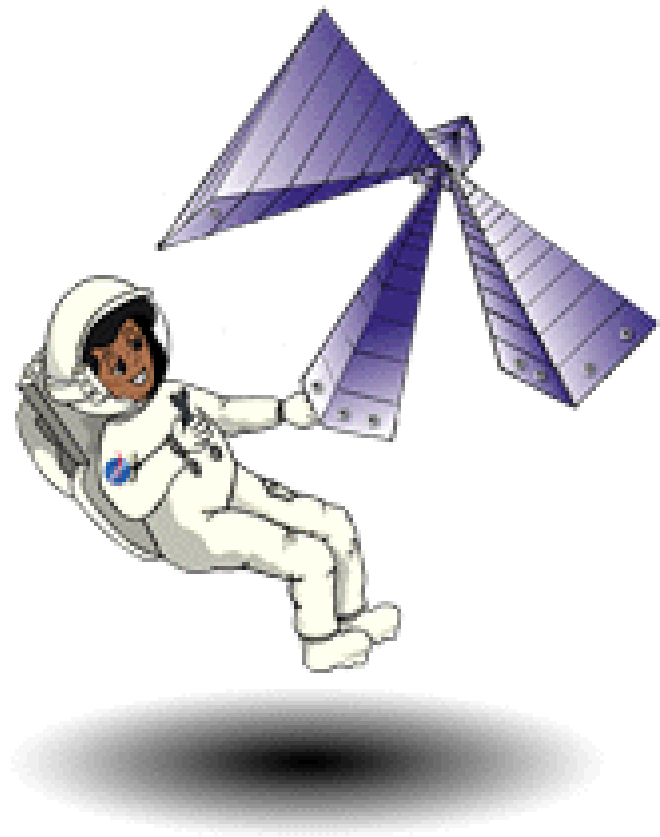
con le sue fasi



**finalmente
stiamo per
arrivare**



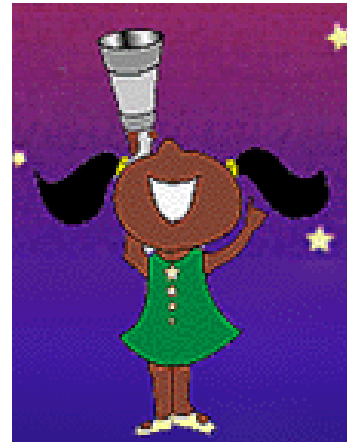
Simone...non sporgerti



atterriamo o...

...alluniamo?

**i nostri amici rimasti
a Terra ci guardano**



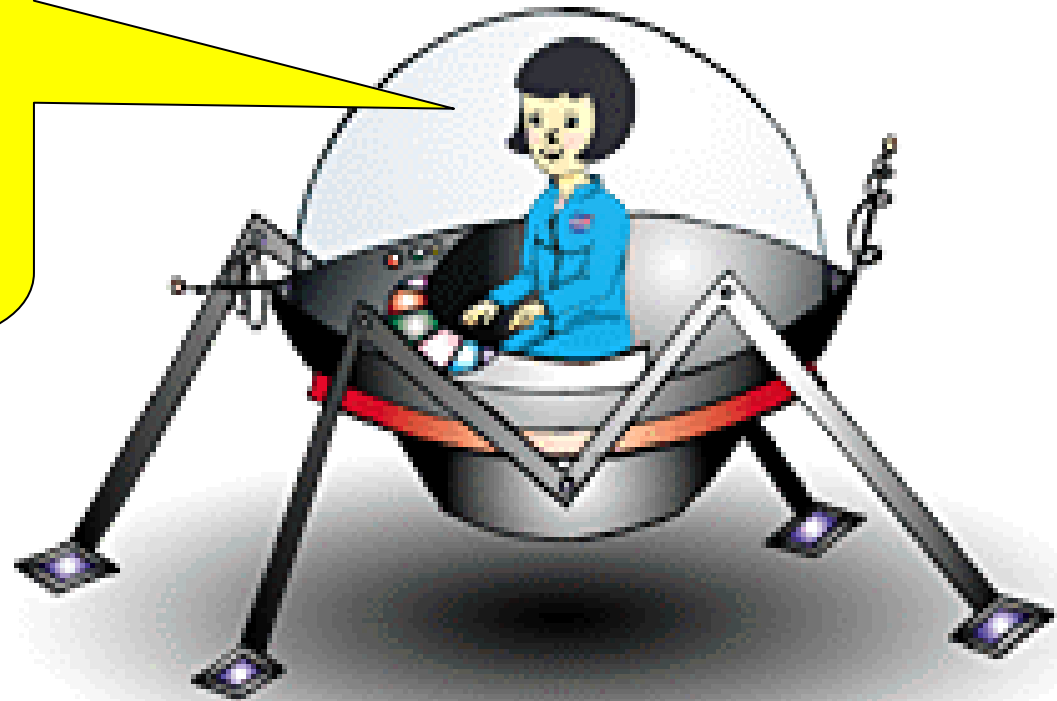
attenti a non inciampare

Apollo 11



**eccoci arrivati
guardate la
Terra lassu`**

ciao Lilli,
sono sulla Luna.
Mi vedi?



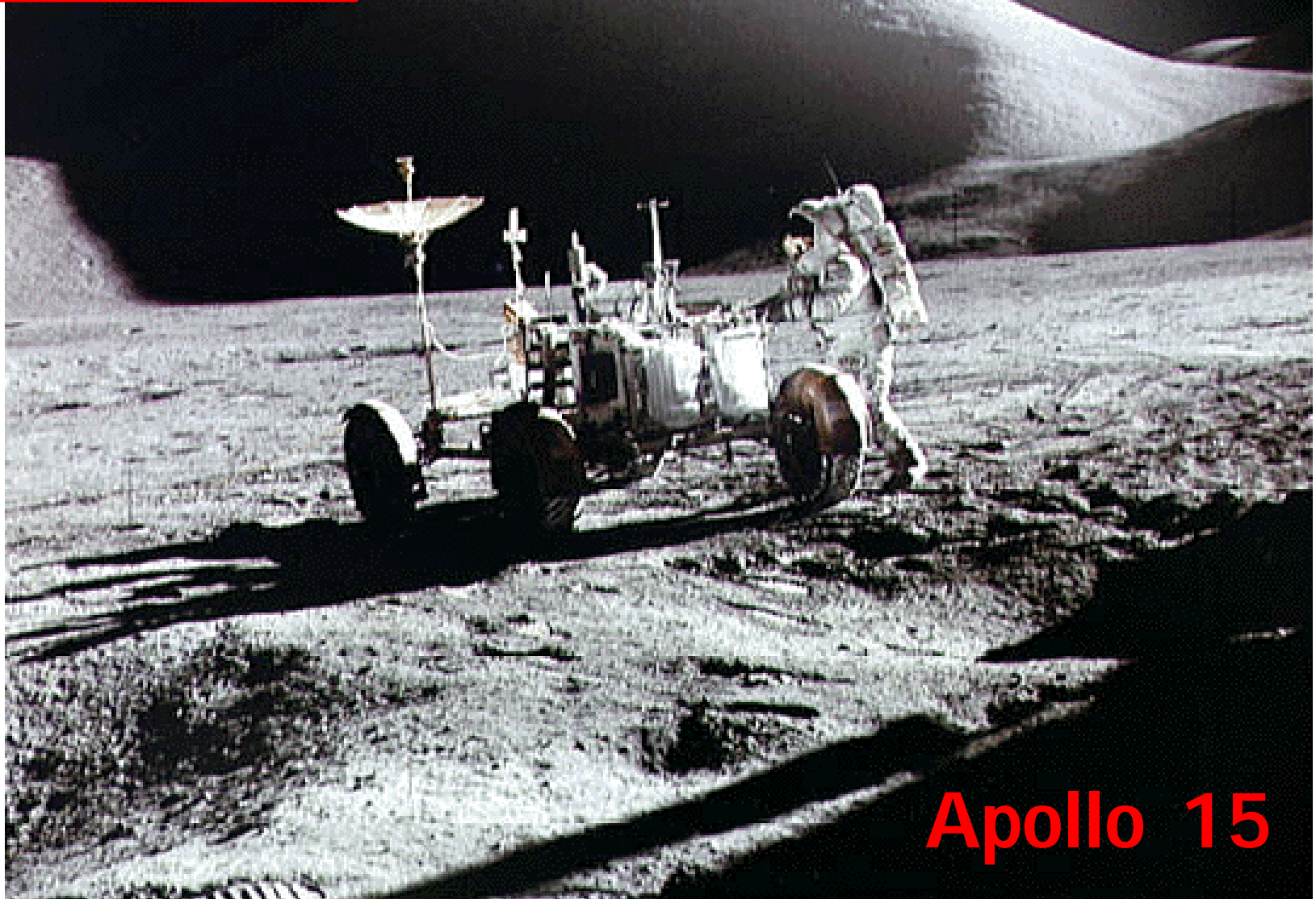


questa impronta
non sparirà
mai più

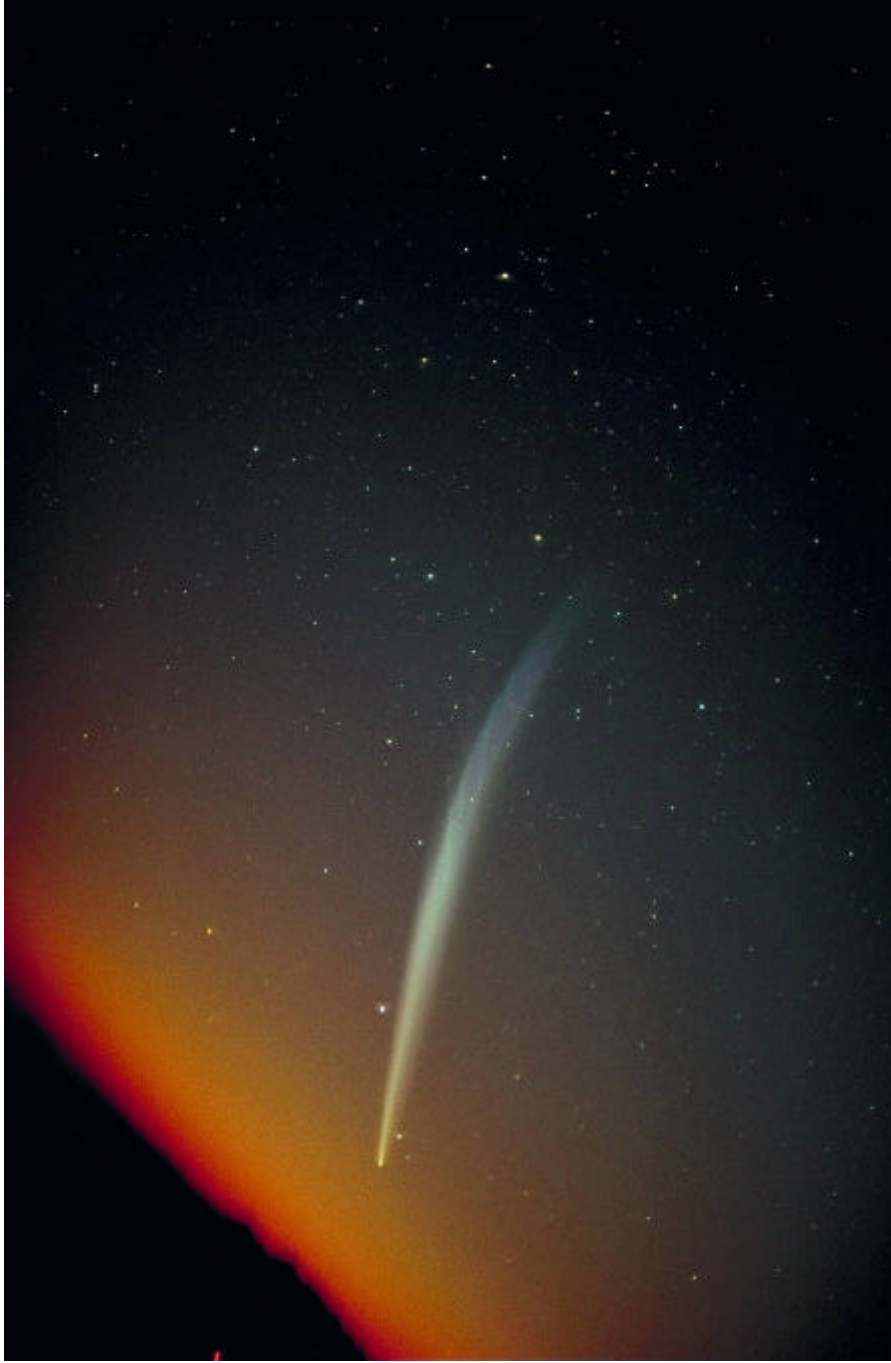
Eccoci arrivati



buon viaggio



Apollo 15



**attenti
alla cometa**

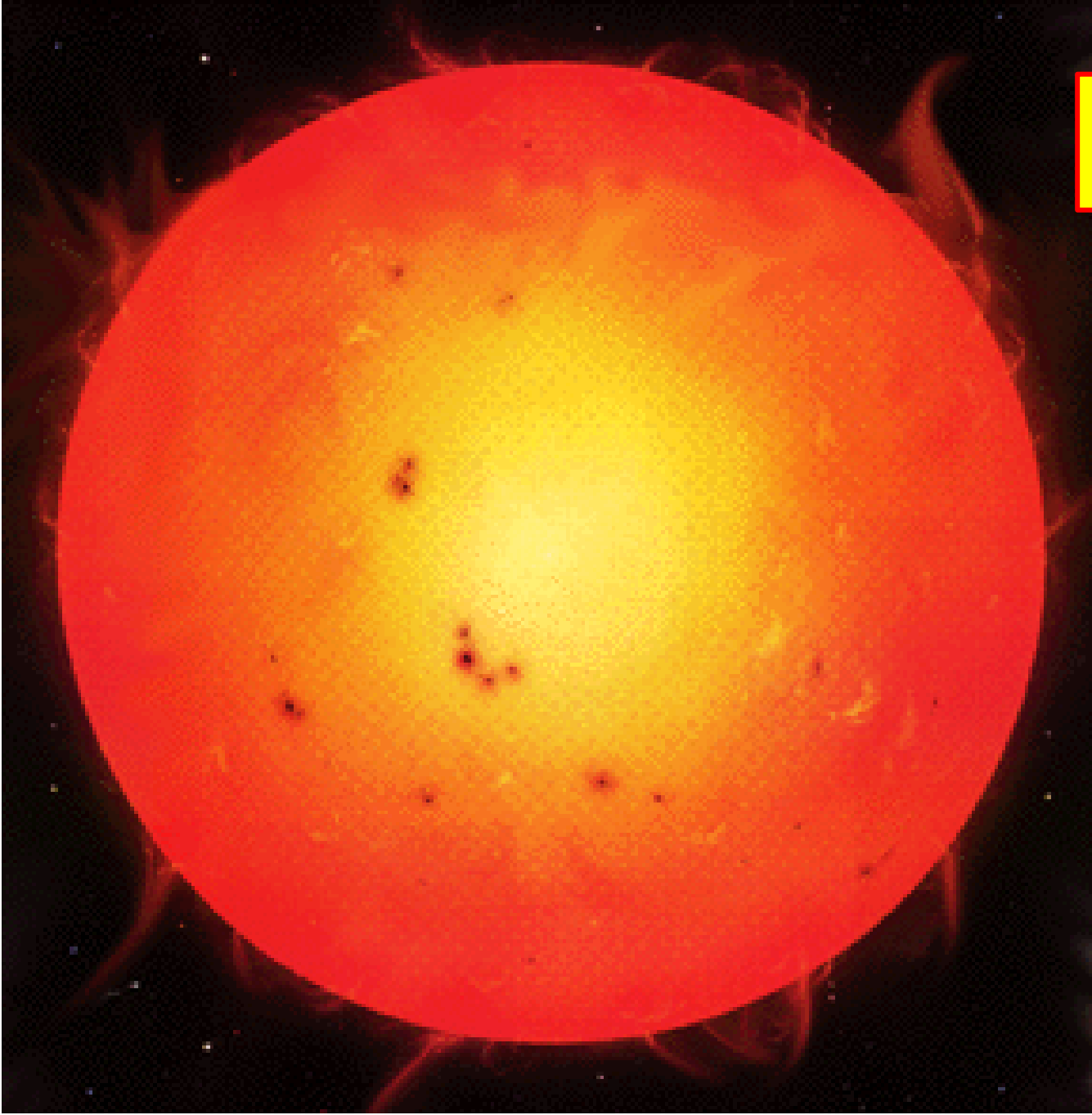
Cometa Hale-Bopp





un'altra!

Il Sole



Eclisse parziale di Sole



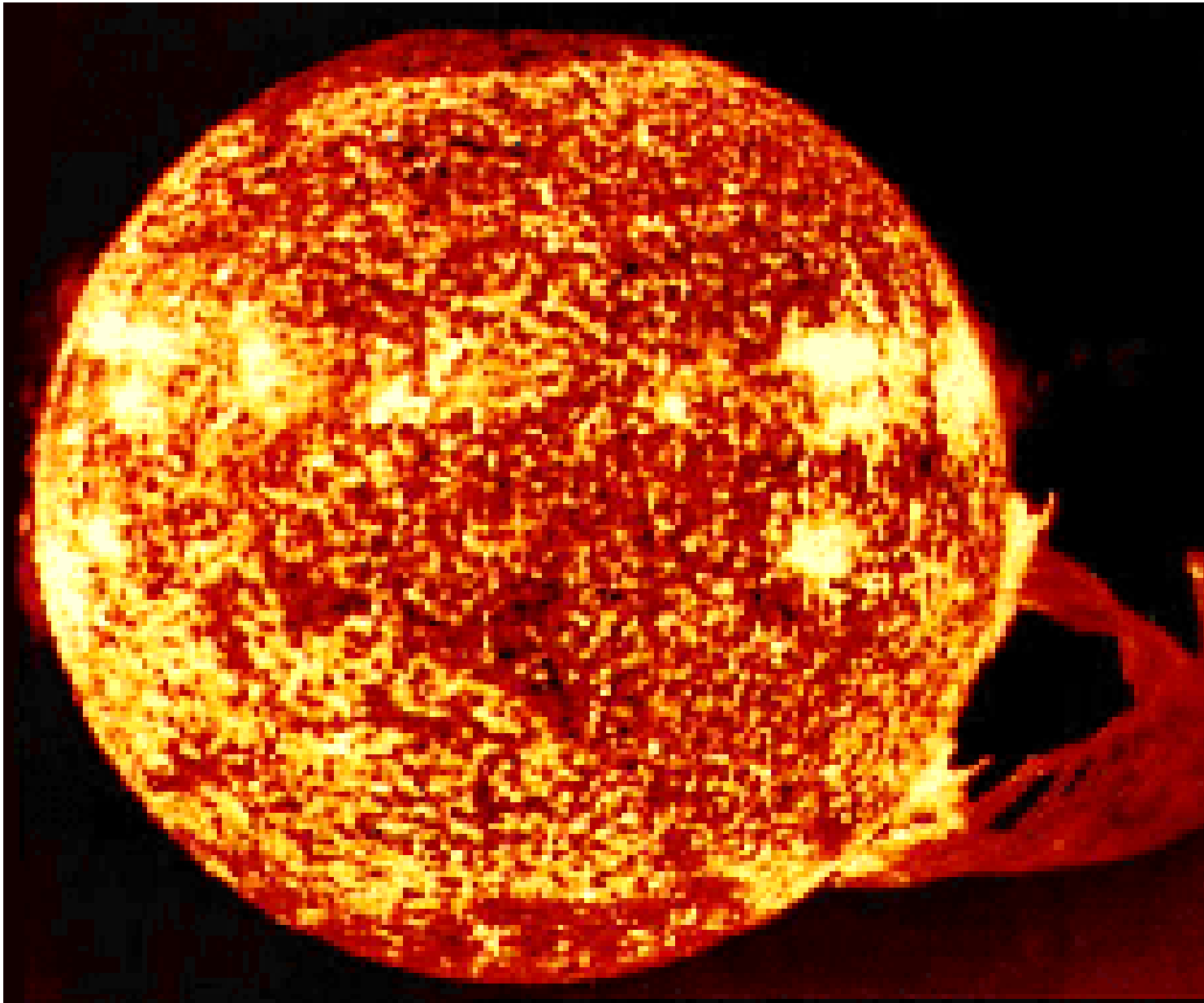
eclisse totale di Sole



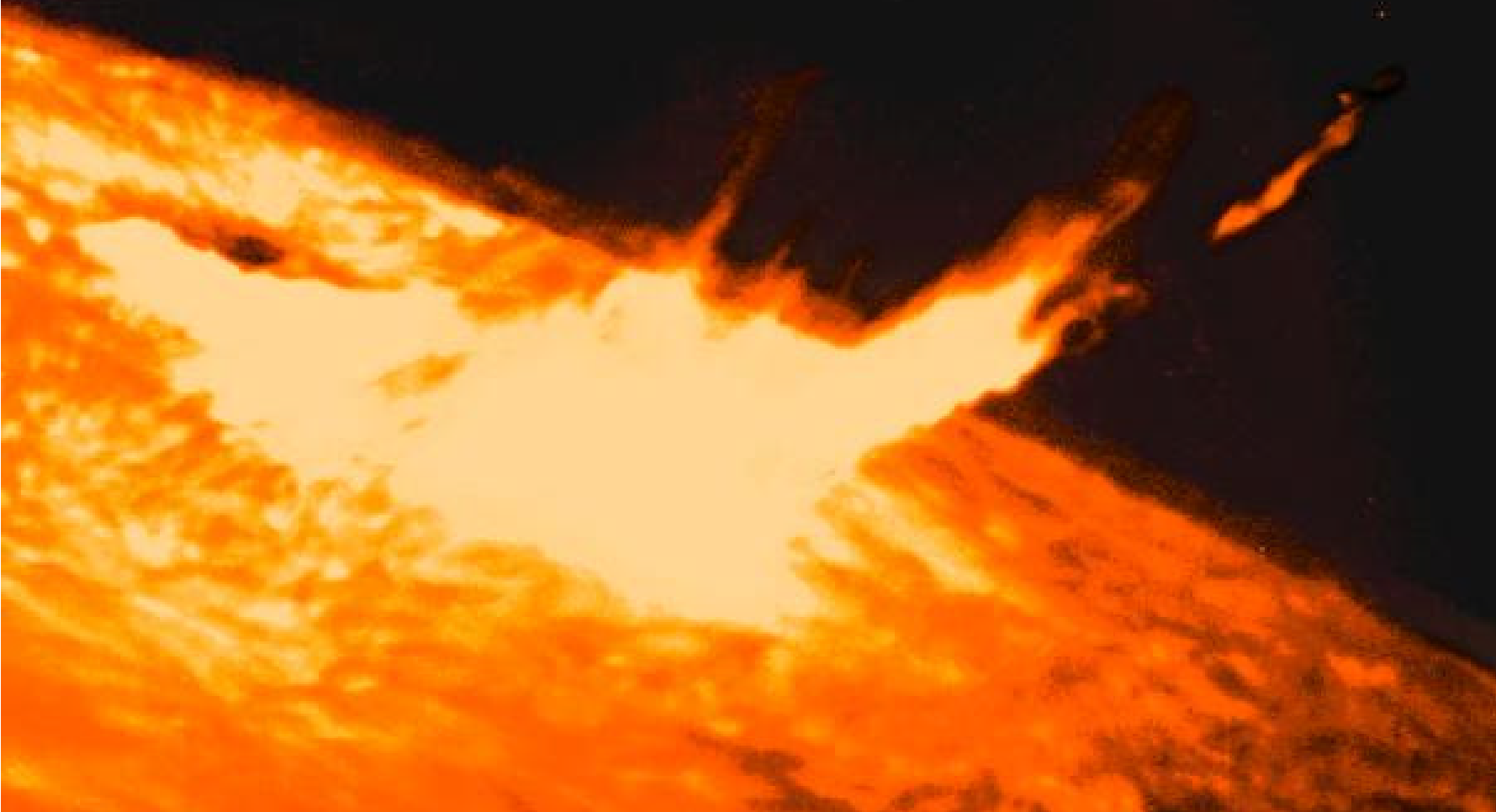
Eclisse di Sole effetto diamante



Il Sole visto dallo Skylab



Fiamme solari



Il sistema solare



5 pianeti allineati

Mercurio

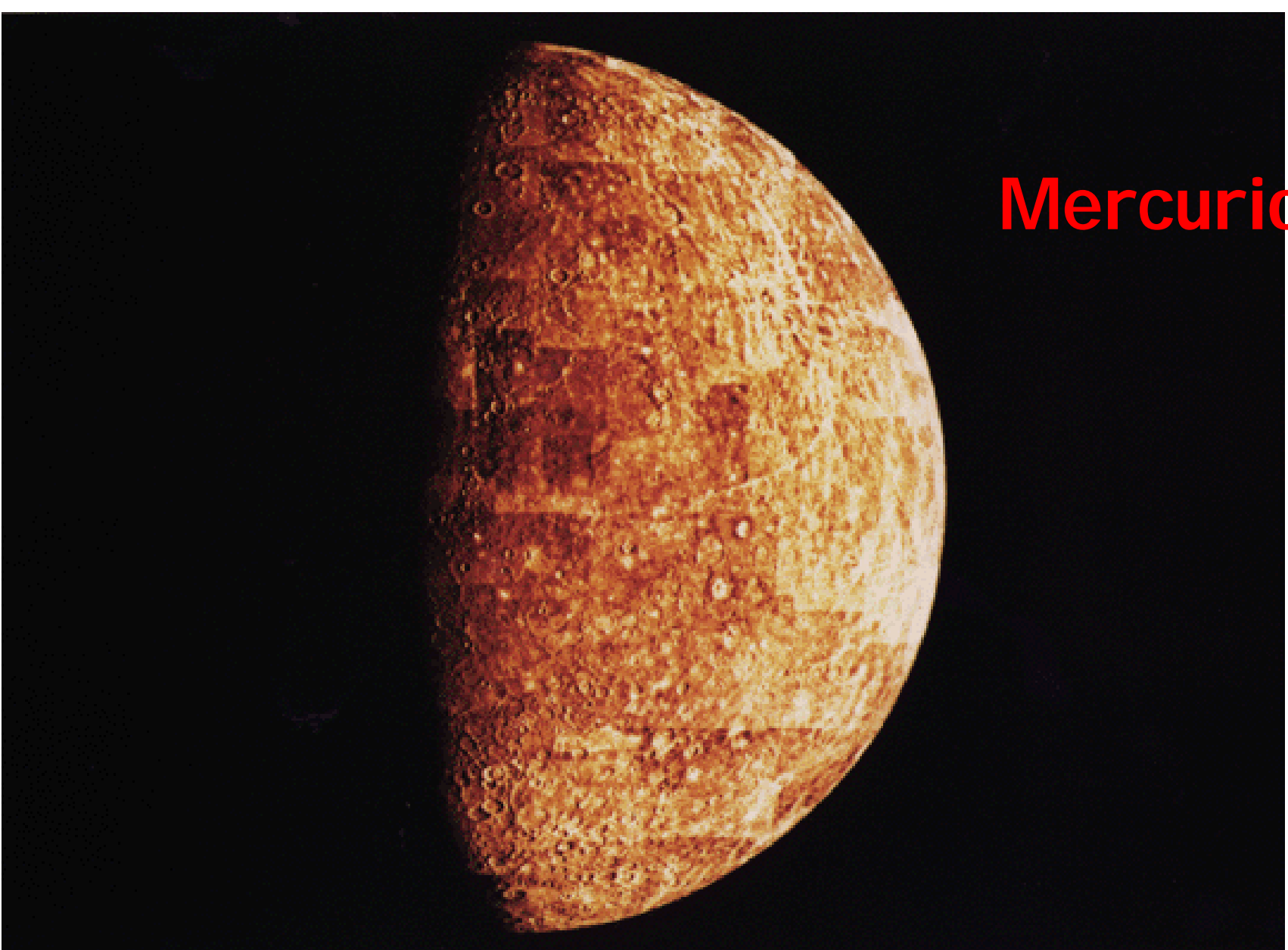
Venere

Marte

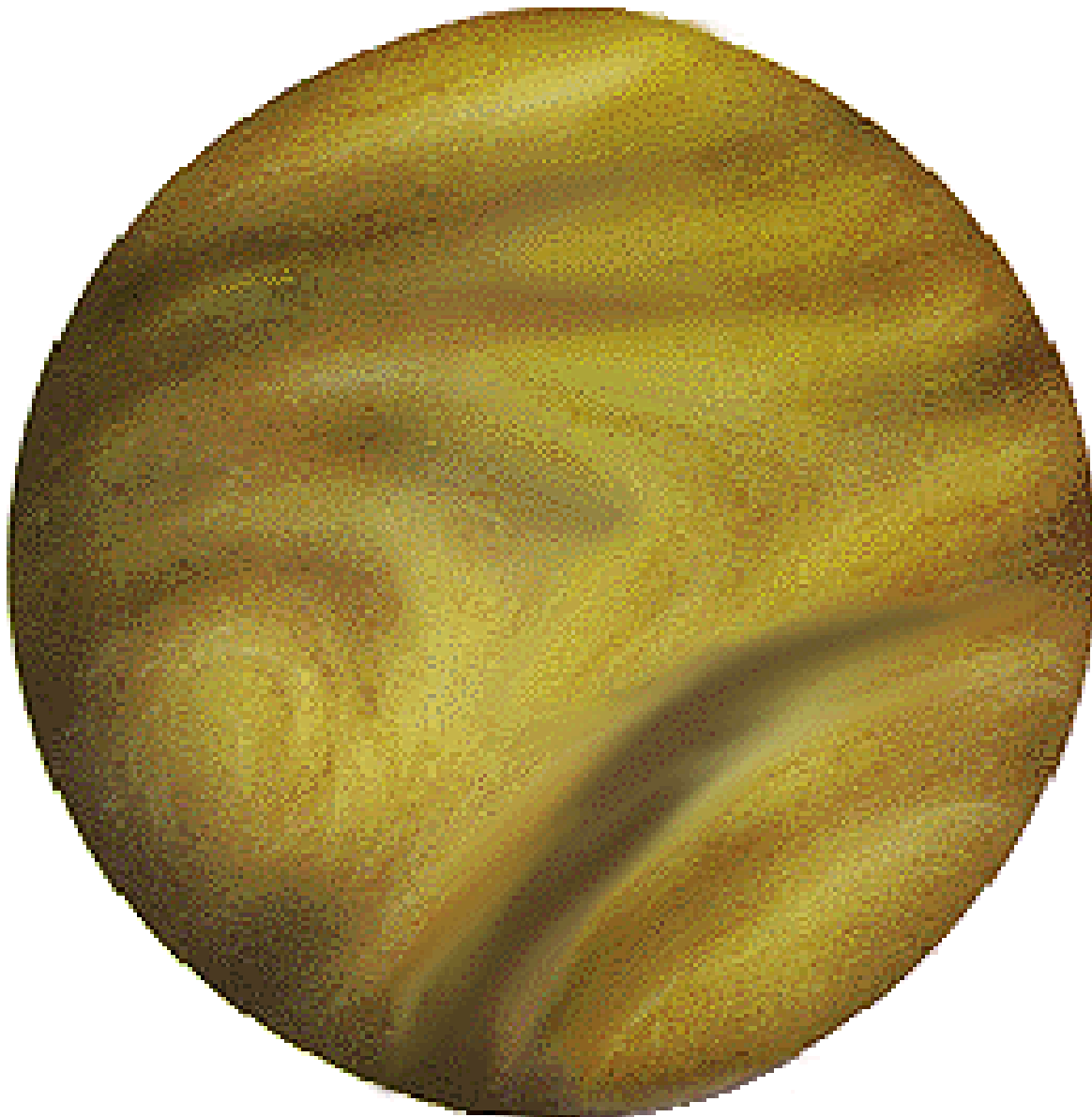
Giove

Saturno

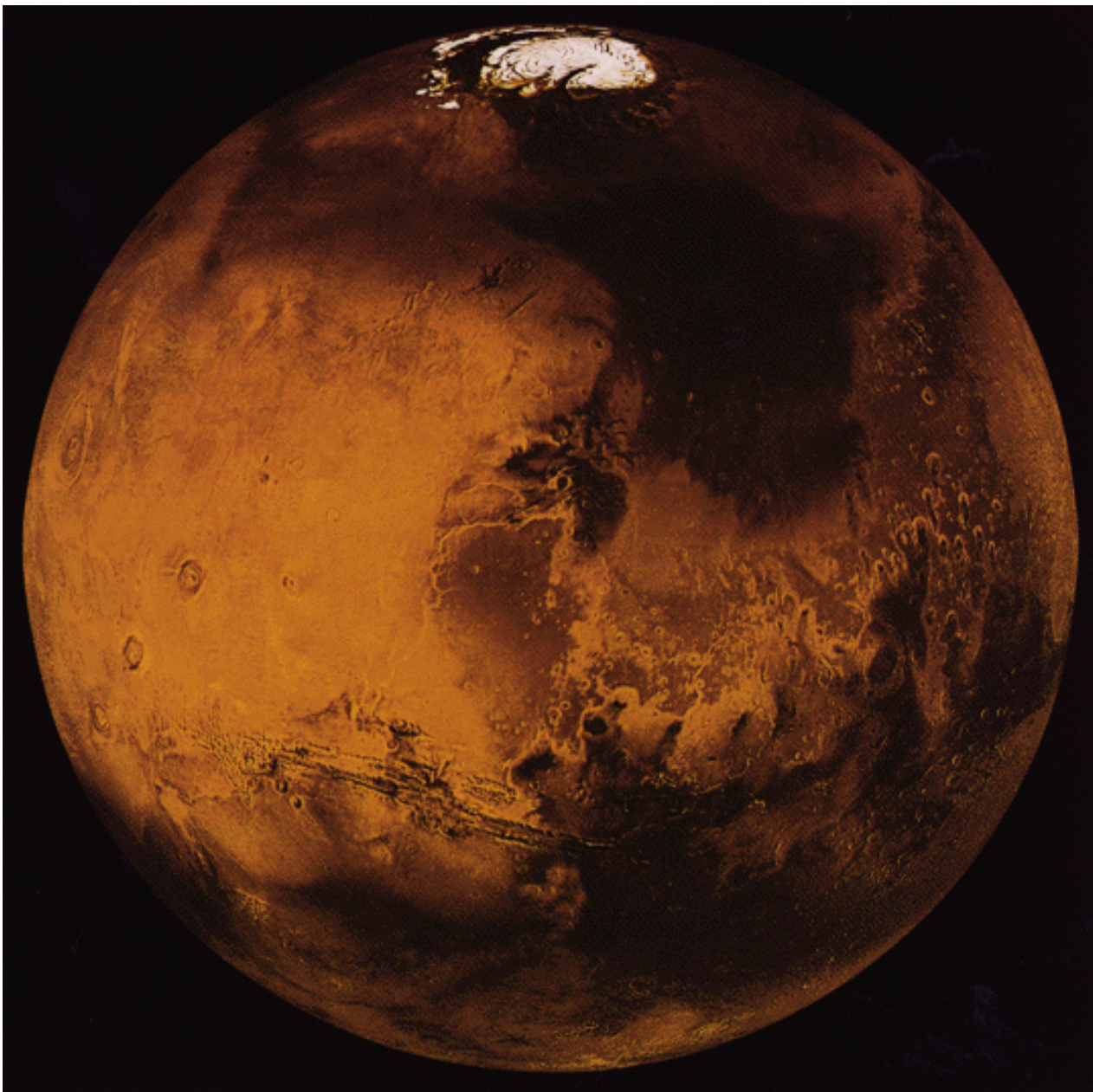




Mercurio



Venere

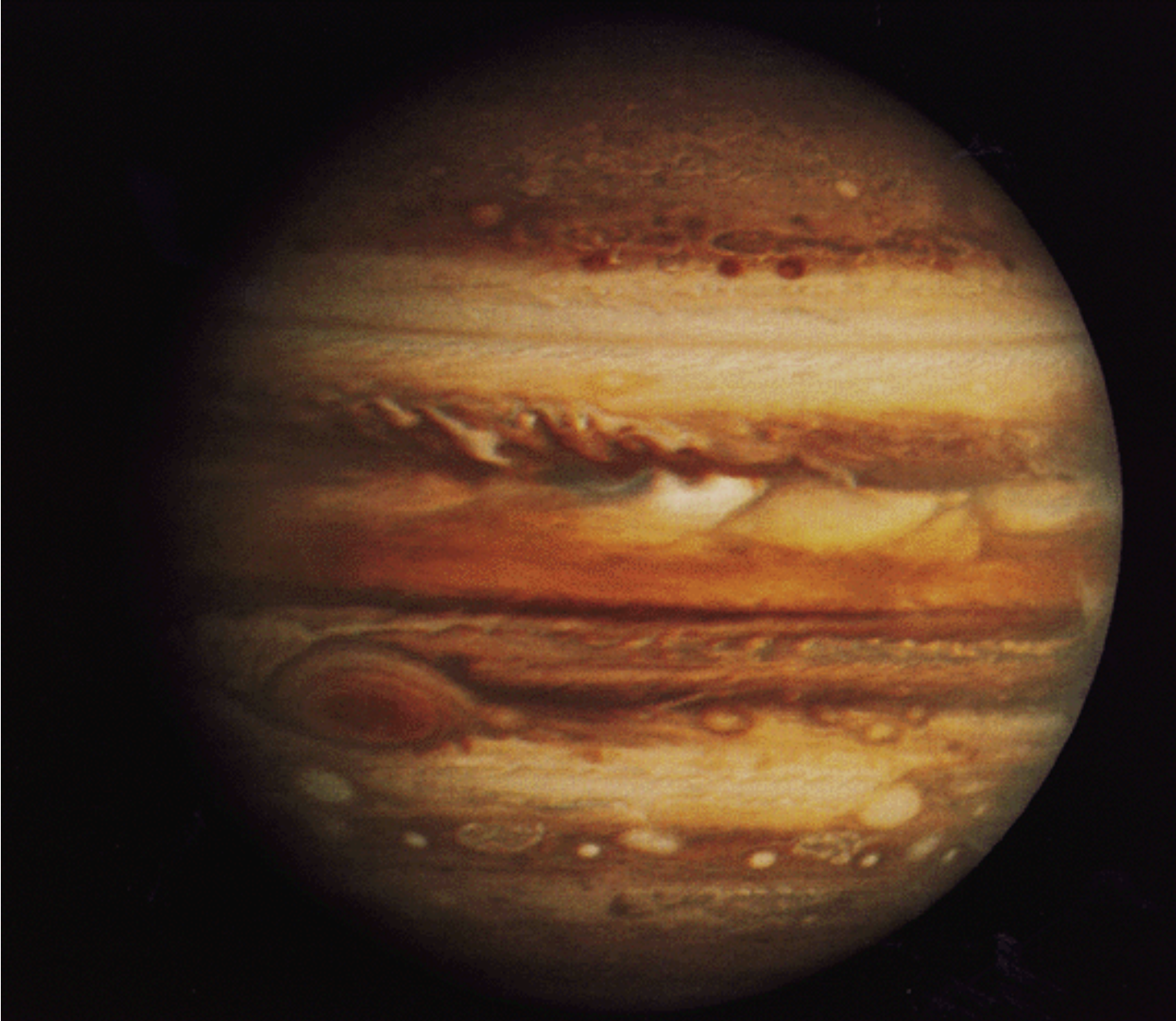


Marte



**Il monte
Olimpo**

Giove





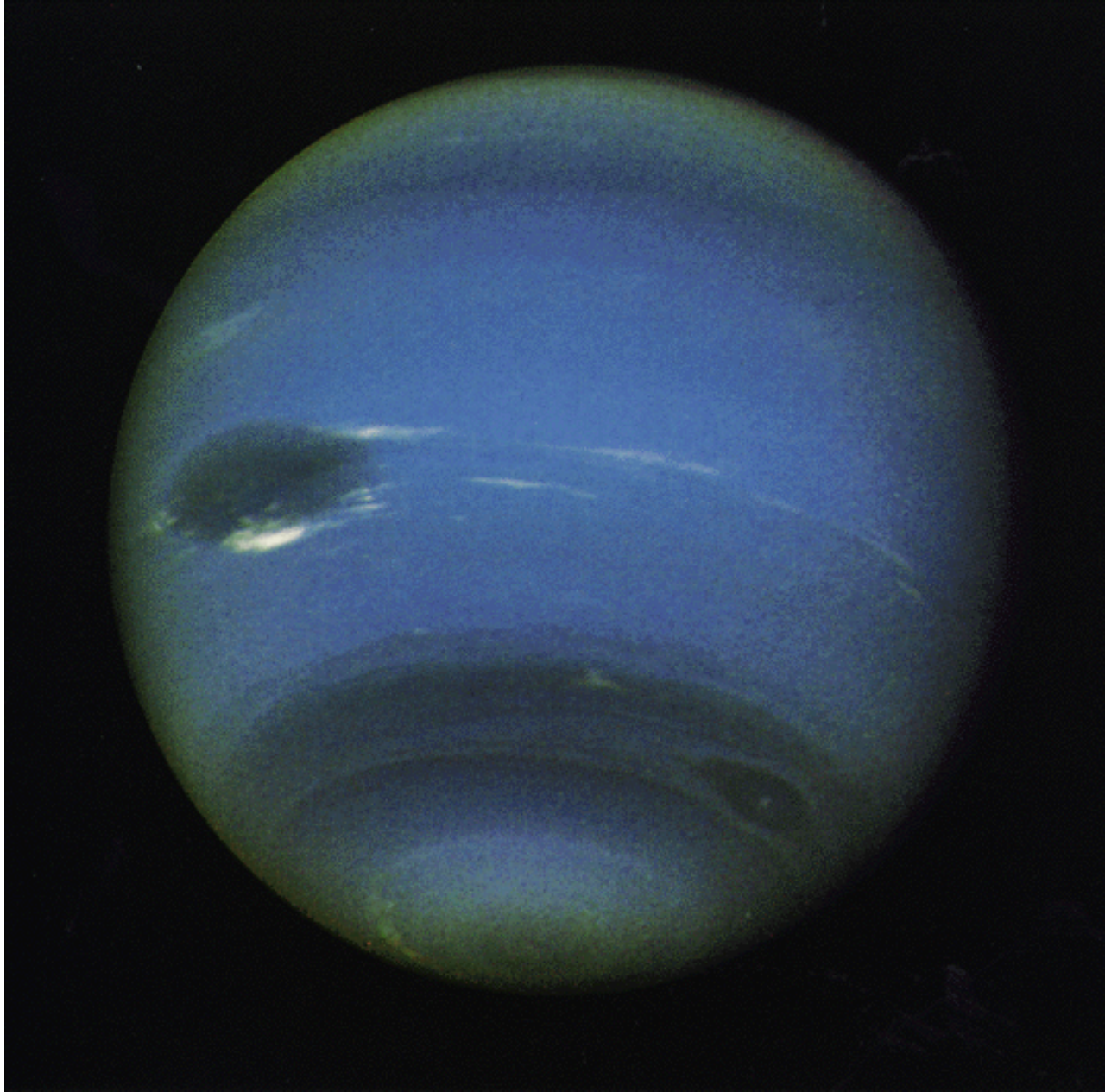
Saturno



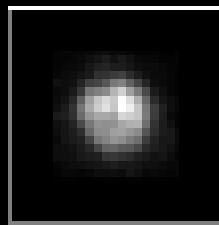
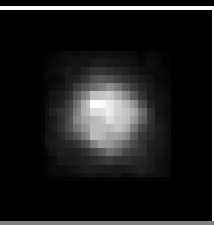
Saturno



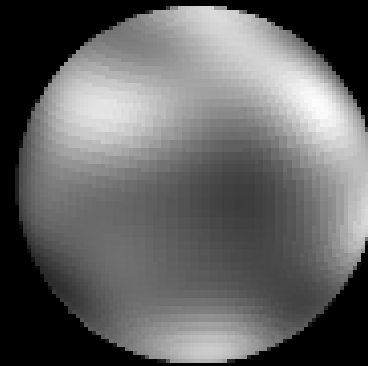
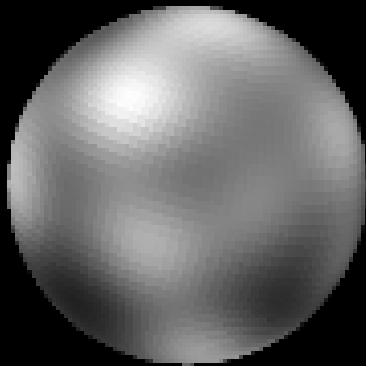
Urano



Nettuno



Plutone



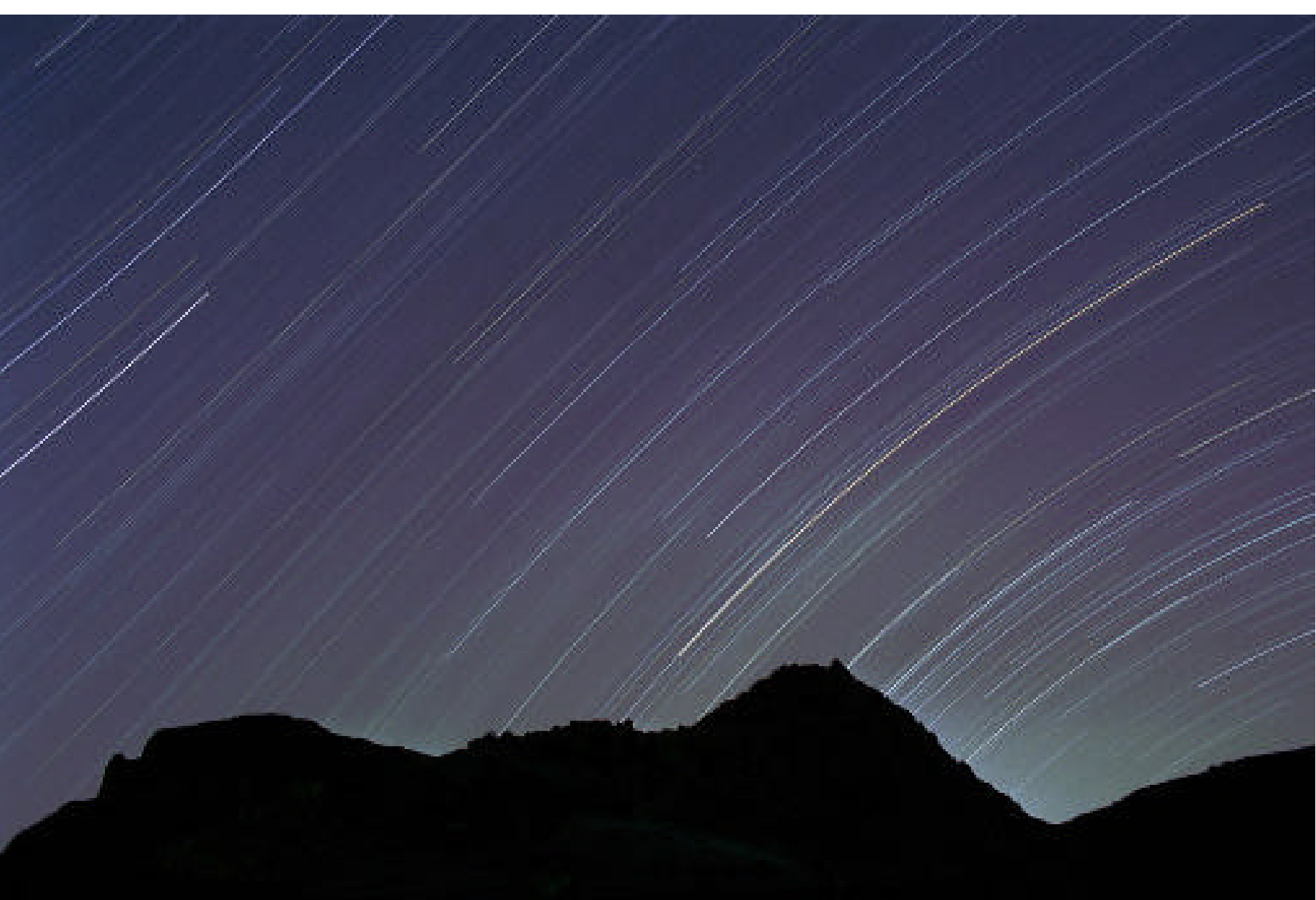
Pluto

HST - FOC

PRC96-09a - ST ScI OPO - March 7, 1996 - A. Stern (SwRI), M. Bule (Lowell Obs.), NASA, ESA



sono le stelle a muoversi o la terra?






Le pleiadi



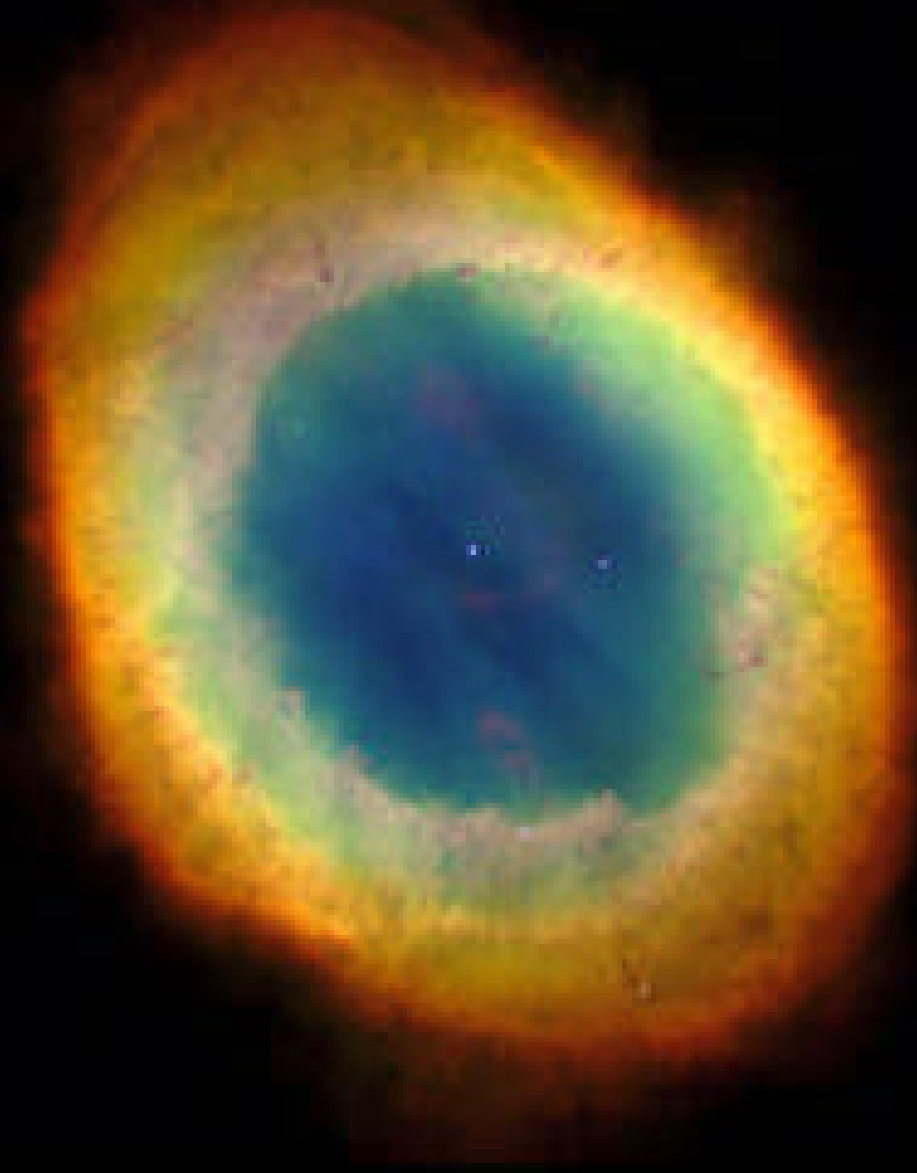
nebulosa testa di cavallo



la nebulosa
aquila

HST

la nebulosa anulare della Lyra



Helix nebula





la nebulosa manubrio

la nebulosa granchio



banduleak -69 202



Supernova 1987A

23 February 1987



Types of Galaxies

Spiral

disk-like

With arms of stars and dust forming a spiral pattern.

Elliptical galaxies are roughly ellipsoidally-shaped, with a bright concentration of stars and gas in the center.

Irregular galaxies have no regular shape and contain less gas and dust than spiral or elliptical galaxies.

Peculiar galaxies are distorted or have unusual shapes, often defined by irregularities in their structure.

They can be formed by collision with another galaxy or similar catastrophic events.



**Il viaggio
e' finito
torniamo
casa**

**era
ora**



P.Galeotti

