

Neutrino Theory and Phenomenology

PART 5

Carlo Giunti

INFN, Sezione di Torino, and Dipartimento di Fisica Teorica, Università di Torino

`carlo.giunti@to.infn.it`

Neutrino Unbound: <http://www.nu.to.infn.it>

NBIA PhD School

Neutrinos underground & in the heavens

The Niels Bohr International Academy, Copenhagen, Denmark

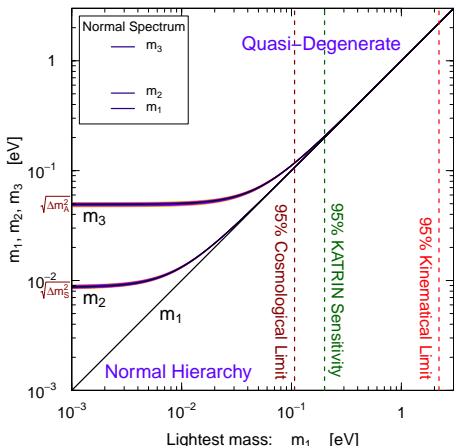
23-27 June 2014

Neutrino Mixing Phenomenology

Open Problems

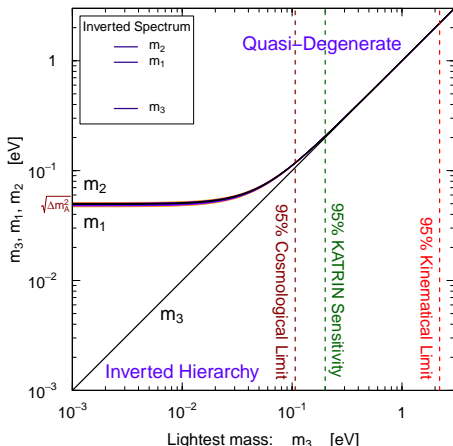
- ▶ $\vartheta_{23} \stackrel{?}{\leq} 45^\circ$?
 - ▶ T2K (Japan), NO ν A (USA), IceCube-PINGU, INO (India), ...
- ▶ Mass Hierarchy ?
 - ▶ NO ν A (USA), JUNO (China), RENO-50 (Korea), IceCube-PINGU, INO (India), ...
- ▶ CP violation ?
 - ▶ NO ν A (USA), LBNE (USA), LAGUNA-LBNO (EU), HyperK (Japan), ...
- ▶ Absolute Mass Scale ?
 - ▶ β Decay, Neutrinoless Double- β Decay, Cosmology, ...
- ▶ Dirac or Majorana ?
 - ▶ Neutrinoless Double- β Decay, ...
- ▶ Beyond Three-Neutrino Mixing ? Sterile Neutrinos ?

Absolute Scale of Neutrino Masses



$$m_2^2 = m_1^2 + \Delta m_{21}^2 = m_1^2 + \Delta m_S^2$$

$$m_3^2 = m_1^2 + \Delta m_{31}^2 = m_1^2 + \Delta m_A^2$$



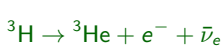
$$m_1^2 = m_3^2 - \Delta m_{31}^2 = m_3^2 + \Delta m_A^2$$

$$m_2^2 = m_1^2 + \Delta m_{21}^2 \simeq m_3^2 + \Delta m_A^2$$

Quasi-Degenerate for $m_1 \simeq m_2 \simeq m_3 \simeq m_\nu \gtrsim \sqrt{\Delta m_A^2} \simeq 5 \times 10^{-2} \text{ eV}$

95% Cosmological Limit: Planck + WMAP9 + highL + BAO [arXiv:1303.5076]

Tritium Beta-Decay

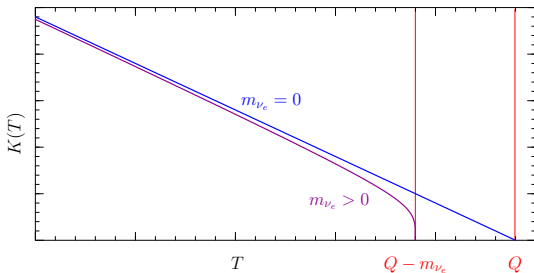


$$\frac{d\Gamma}{dT} = \frac{(\cos\vartheta_C G_F)^2}{2\pi^3} |\mathcal{M}|^2 F(E) p E (Q - T) \sqrt{(Q - T)^2 - m_{\nu_e}^2}$$

$$Q = M_{{}^3\text{H}} - M_{{}^3\text{He}} - m_e = 18.58 \text{ keV}$$

Kurie plot

$$K(T) = \sqrt{\frac{d\Gamma/dT}{\frac{(\cos\vartheta_C G_F)^2}{2\pi^3} |\mathcal{M}|^2 F(E) p E}} = \left[(Q - T) \sqrt{(Q - T)^2 - m_{\nu_e}^2} \right]^{1/2}$$



$$m_{\nu_e} < 2.2 \text{ eV} \quad (95\% \text{ C.L.})$$

Mainz & Troitsk

[Weinheimer, hep-ex/0210050]

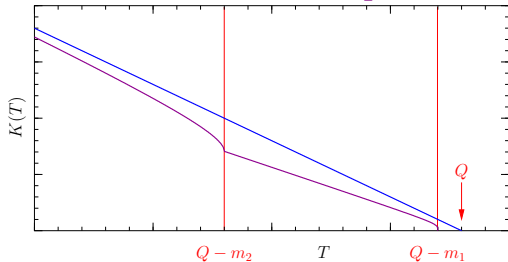
future: KATRIN

[www.katrin.kit.edu]

start data taking in 2015

sensitivity: $m_{\nu_e} \simeq 0.2 \text{ eV}$

$$\text{Neutrino Mixing} \implies K(T) = \left[(Q - T) \sum_k |U_{ek}|^2 \sqrt{(Q - T)^2 - m_k^2} \right]^{1/2}$$



analysis of data is different from the no-mixing case:

$2N - 1$ parameters

$$\left(\sum_k |U_{ek}|^2 = 1 \right)$$

if experiment is not sensitive to masses ($m_k \ll Q - T$)

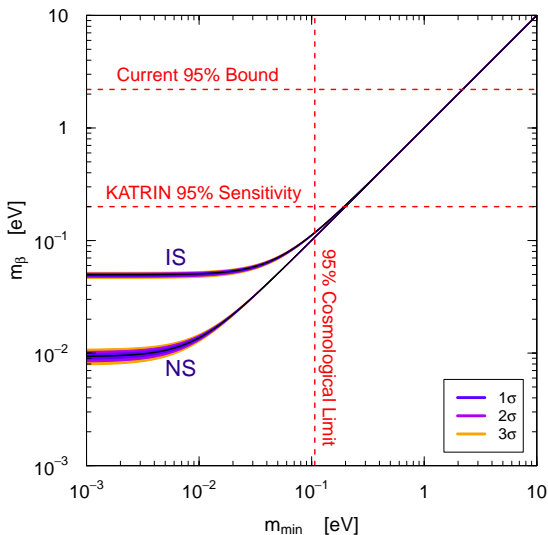
effective mass:

$$m_\beta^2 = \sum_k |U_{ek}|^2 m_k^2$$

$$\begin{aligned} K^2 &= (Q - T)^2 \sum_k |U_{ek}|^2 \sqrt{1 - \frac{m_k^2}{(Q - T)^2}} \simeq (Q - T)^2 \sum_k |U_{ek}|^2 \left[1 - \frac{1}{2} \frac{m_k^2}{(Q - T)^2} \right] \\ &= (Q - T)^2 \left[1 - \frac{1}{2} \frac{m_\beta^2}{(Q - T)^2} \right] \simeq (Q - T) \sqrt{(Q - T)^2 - m_\beta^2} \end{aligned}$$

Predictions of 3ν -Mixing Paradigm

$$m_\beta^2 = |U_{e1}|^2 m_1^2 + |U_{e2}|^2 m_2^2 + |U_{e3}|^2 m_3^2$$



▶ Quasi-Degenerate:

$$m_\beta^2 \simeq m_\nu^2 \sum_k |U_{ek}|^2 = m_\nu^2$$

▶ Inverted Hierarchy:

$$m_\beta^2 \simeq (1 - s_{13}^2) \Delta m_A^2 \simeq \Delta m_A^2$$

▶ Normal Hierarchy:

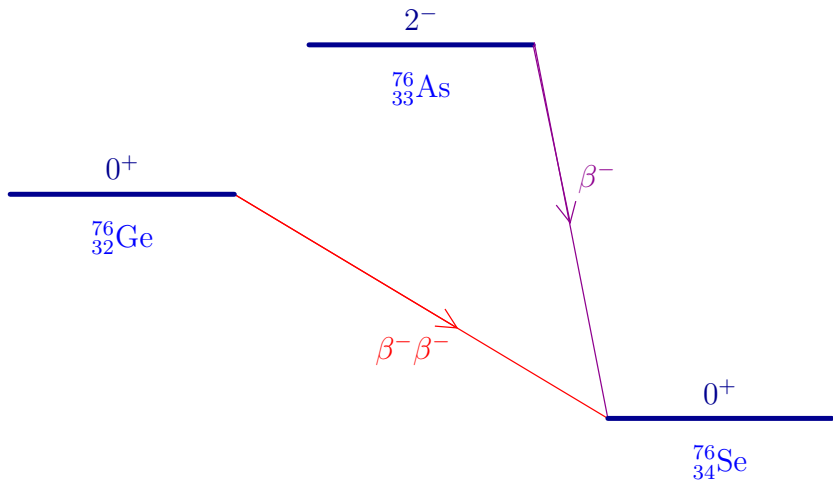
$$m_\beta^2 \simeq s_{12}^2 c_{13}^2 \Delta m_S^2 + s_{13}^2 \Delta m_A^2 \\ \simeq 2 \times 10^{-5} + 6 \times 10^{-5} \text{ eV}^2$$

▶ $m_\beta \lesssim 4 \times 10^{-2} \text{ eV}$



Normal Spectrum

Neutrinoless Double-Beta Decay



Effective Majorana Neutrino Mass:

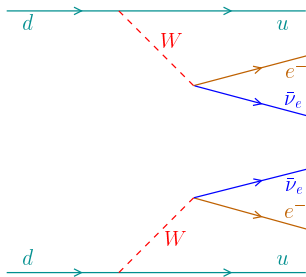
$$m_{\beta\beta} = \sum_k U_{ek}^2 m_k$$

Two-Neutrino Double- β Decay: $\Delta L = 0$

$$\mathcal{N}(A, Z) \rightarrow \mathcal{N}(A, Z + 2) + e^- + e^- + \bar{\nu}_e + \bar{\nu}_e$$

$$(T_{1/2}^{2\nu})^{-1} = G_{2\nu} |\mathcal{M}_{2\nu}|^2$$

second order weak interaction process
in the Standard Model



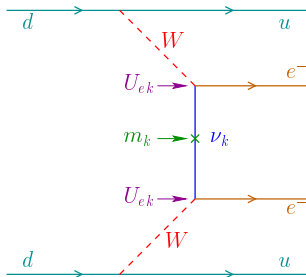
Neutrinoless Double- β Decay: $\Delta L = 2$

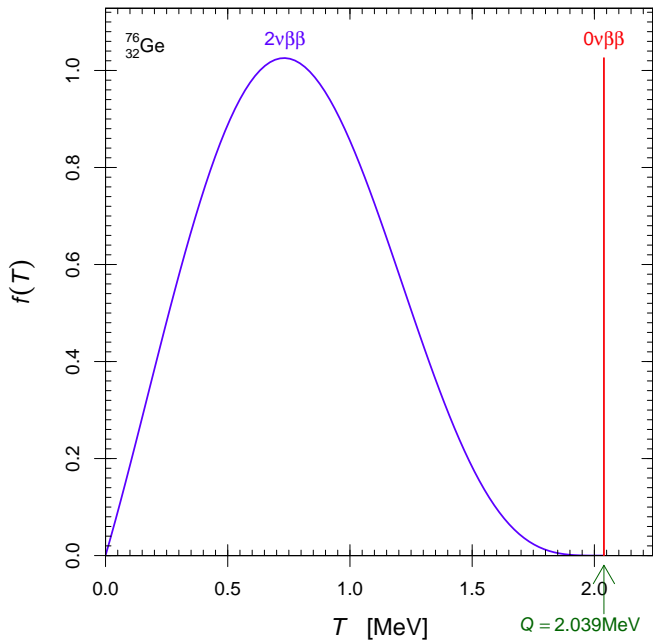
$$\mathcal{N}(A, Z) \rightarrow \mathcal{N}(A, Z + 2) + e^- + e^-$$

$$(T_{1/2}^{0\nu})^{-1} = G_{0\nu} |\mathcal{M}_{0\nu}|^2 |m_{\beta\beta}|^2$$

effective
Majorana
mass

$$|m_{\beta\beta}| = \left| \sum_k U_{ek}^2 m_k \right|$$



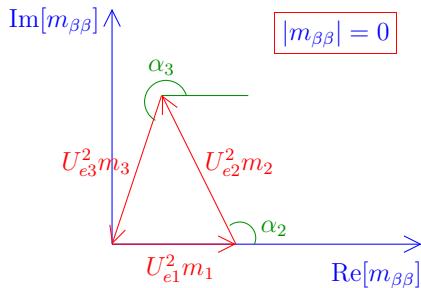
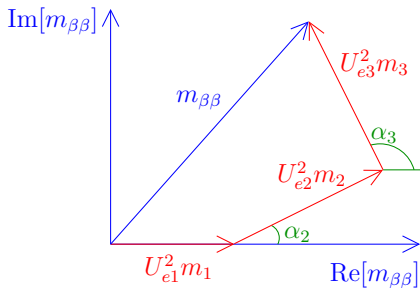


Effective Majorana Neutrino Mass

$$m_{\beta\beta} = \sum_k U_{ek}^2 m_k \quad \text{complex } U_{ek} \Rightarrow \text{possible cancellations}$$

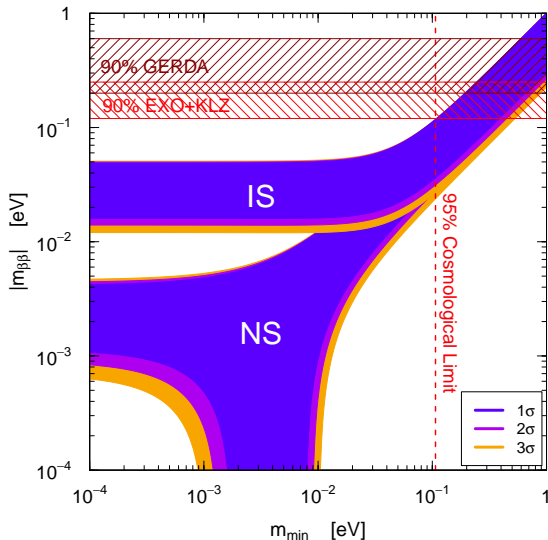
$$m_{\beta\beta} = |U_{e1}|^2 m_1 + |U_{e2}|^2 e^{i\alpha_2} m_2 + |U_{e3}|^2 e^{i\alpha_3} m_3$$

$$\alpha_2 = 2\lambda_2 \quad \alpha_3 = 2(\lambda_3 - \delta_{13})$$



Predictions of 3ν -Mixing Paradigm

$$m_{\beta\beta} = |U_{e1}|^2 m_1 + |U_{e2}|^2 e^{i\alpha_2} m_2 + |U_{e3}|^2 e^{i\alpha_3} m_3$$



► Quasi-Degenerate:

$$|m_{\beta\beta}| \simeq m_\nu \sqrt{1 - s_{2\vartheta_{12}}^2 s_{\alpha_2}^2}$$

► Inverted Hierarchy:

$$|m_{\beta\beta}| \simeq \sqrt{\Delta m_A^2 (1 - s_{2\vartheta_{12}}^2 s_{\alpha_2}^2)}$$

► Normal Hierarchy:

$$|m_{\beta\beta}| \simeq |s_{12}^2 \sqrt{\Delta m_S^2} + e^{i\alpha} s_{13}^2 \sqrt{\Delta m_A^2}|$$

$$\simeq |2.7 + 1.2e^{i\alpha}| \times 10^{-3} \text{ eV}$$

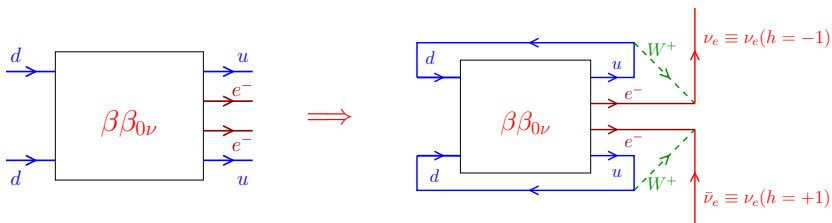
$$m_1 \gtrsim 10^{-3} \text{ eV} \Rightarrow \text{cancellation?}$$

$$|m_{\beta\beta}| \lesssim 10^{-2} \text{ eV} \Rightarrow \text{Normal Spectrum}$$

$\beta\beta_{0\nu}$ Decay \Leftrightarrow Majorana Neutrino Mass

$|m_{\beta\beta}|$ can vanish because of unfortunate cancellations among m_1, m_2, m_3 contributions or because neutrinos are Dirac

$\beta\beta_{0\nu}$ decay can be generated by another mechanism beyond SM



[Schechter, Valle, PRD 25 (1982) 2951] [Takasugi, PLB 149 (1984) 372]

Majorana Mass Term:

$$\mathcal{L}_{eL}^M = -\frac{1}{2} m_{ee} (\overline{\nu_{eL}^c} \nu_{eL} + \overline{\nu_{eL}} \nu_{eL}^c)$$

four-loop diagram calculation: $m_{ee} \sim 10^{-24}$ eV [Duerr, Lindner, Merle, JHEP 06 (2011) 091]

- ▶ In any case finding $\beta\beta_{0\nu}$ decay is important information to solve the Dirac-Majorana question in favor of Majorana
- ▶ On the other hand, it is not possible to prove experimentally that neutrinos are Dirac.
A Dirac neutrino is equivalent to 2 Majorana neutrinos with the same mass.
Impossible to prove experimentally that mass splitting is exactly zero.

Sterile Neutrinos

- ▶ I consider sterile neutrinos with mass scale ~ 1 eV in light of short-baseline Reactor Anomaly, Gallium Anomaly, LSND.
 - ▶ Other possibilities (not incompatible):
 - ▶ Very light sterile neutrinos with mass scale $\ll 1$ eV: important for solar neutrino phenomenology
 - [Das, Pulido, Picariello, PRD 79 (2009) 073010]
 - [de Holanda, Smirnov, PRD 83 (2011) 113011]
 - ▶ Heavy sterile neutrinos with mass scale $\gg 1$ eV: could be Warm Dark Matter
 - [Kusenko, Phys. Rept. 481 (2009) 1]
- [Boyarsky, Ruchayskiy, Shaposhnikov, Ann. Rev. Nucl. Part. Sci. 59 (2009) 191]
[Drewes, IJMPE, 22 (2013) 1330019]

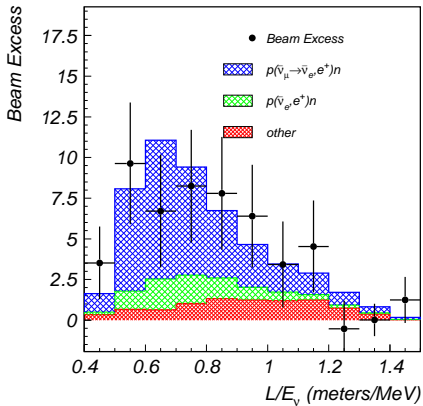
LSND

[PRL 75 (1995) 2650; PRC 54 (1996) 2685; PRL 77 (1996) 3082; PRD 64 (2001) 112007]

$$\bar{\nu}_\mu \rightarrow \bar{\nu}_e$$

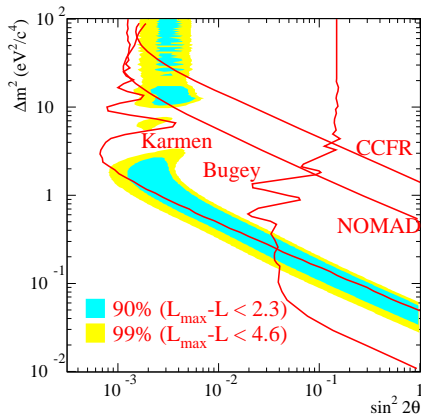
$$L \simeq 30 \text{ m}$$

$$20 \text{ MeV} \leq E \leq 200 \text{ MeV}$$



3.8 σ excess

$$\Delta m_{\text{LSND}}^2 \gtrsim 0.2 \text{ eV}^2 \quad (\gg \Delta m_{\text{A}}^2 \gg \Delta m_{\text{S}}^2)$$



MiniBooNE

$L \simeq 541 \text{ m}$

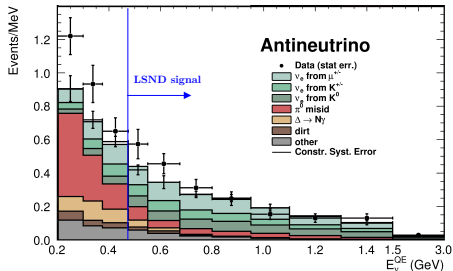
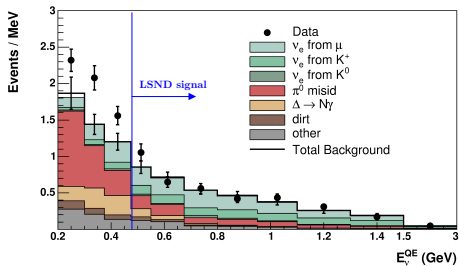
$200 \text{ MeV} \leq E \lesssim 3 \text{ GeV}$

$\nu_\mu \rightarrow \nu_e$

[PRL 102 (2009) 101802]

$\bar{\nu}_\mu \rightarrow \bar{\nu}_e$

[PRL 110 (2013) 161801]

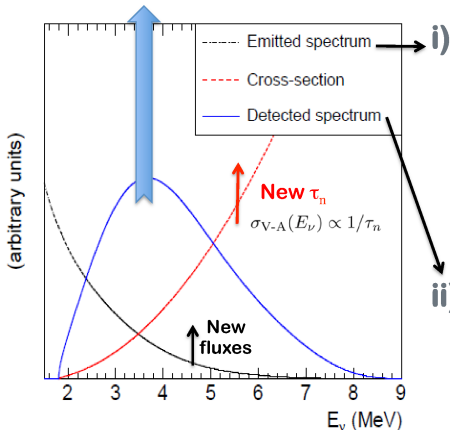


- ▶ Purpose: check LSND signal.
- ▶ Different L and E .
- ▶ Similar L/E (oscillations).
- ▶ LSND signal: $E > 475 \text{ MeV}$.

- ▶ Agreement with LSND signal?
- ▶ CP violation?
- ▶ Low-energy anomaly!

New Reactor $\bar{\nu}_e$ Fluxes

Increased prediction of
detected flux by 6.5%



i) Neutrino Emission:

- Improved reactor neutrino spectra \rightarrow +3.5%
- Accounting for long-lived isotopes in reactors \rightarrow +1%

ii) Neutrino Detection:

- Reevaluation of $\sigma_{\text{IBD}} \rightarrow$ +1.5% (evolution of the neutron life time)
- Reanalysis of all SBL experiments

[T. Lasserre, TAUP 2013]

Reactor Electron Antineutrino Anomaly

[Mention et al, PRD 83 (2011) 073006]

[update in White Paper, arXiv:1204.5379]

new reactor $\bar{\nu}_e$ fluxes

[Mueller et al, PRC 83 (2011) 054615]

[Huber, PRC 84 (2011) 024617]

$\sim 2.8\sigma$ anomaly

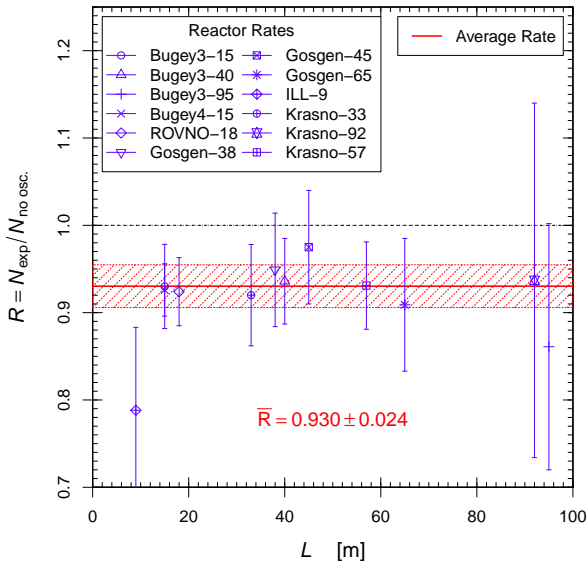
[see also:

Sinev, arXiv:1103.2452;

Ciuffoli, Evslin, Li, JHEP 12 (2012) 110;

Zhang, Qian, Vogel, PRD 87 (2013) 073018;

Ivanov et al, PRC 88 (2013) 055501]



Gallium Anomaly

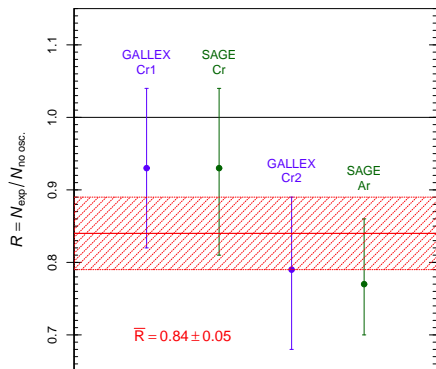
Gallium Radioactive Source Experiments: GALLEX and SAGE

Detection Process: $\nu_e + {}^{71}\text{Ga} \rightarrow {}^{71}\text{Ge} + e^-$

ν_e Sources: $e^- + {}^{51}\text{Cr} \rightarrow {}^{51}\text{V} + \nu_e$ $e^- + {}^{37}\text{Ar} \rightarrow {}^{37}\text{Cl} + \nu_e$

Anomaly supported by new ${}^{71}\text{Ga}({}^3\text{He}, {}^3\text{H}){}^{71}\text{Ge}$ cross section measurement

[Frekers et al., PLB 706 (2011) 134]



$E \sim 0.7 \text{ MeV}$

$\langle L \rangle_{\text{GALLEX}} = 1.9 \text{ m}$

$\langle L \rangle_{\text{SAGE}} = 0.6 \text{ m}$

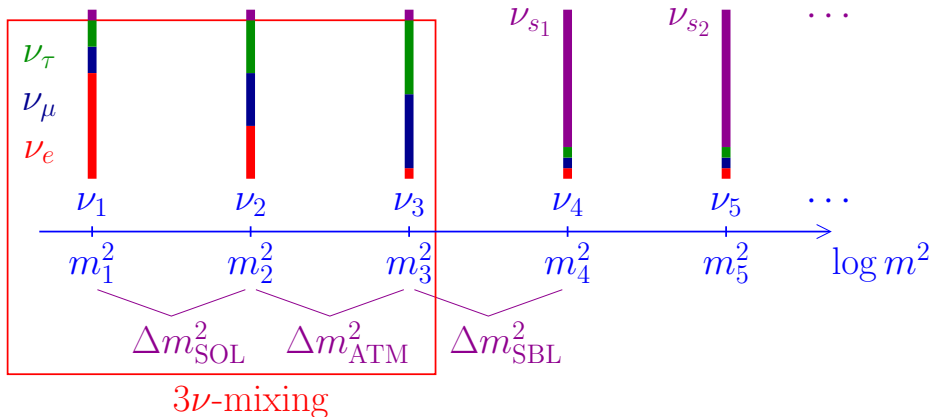
$\sim 2.9\sigma$ anomaly

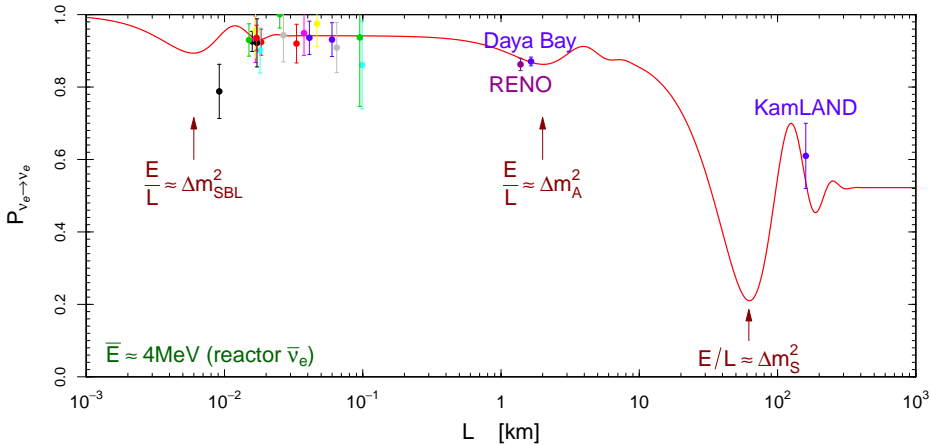
[SAGE, PRC 73 (2006) 045805; PRC 80 (2009) 015807]

[Laveder et al, Nucl.Phys.Proc.Suppl. 168 (2007) 344; MPLA 22 (2007) 2499; PRD 78 (2008) 073009; PRC 83 (2011) 065504; PRD 86 (2012) 113014]

[Mention et al, PRD 83 (2011) 073006]

Beyond Three-Neutrino Mixing: Sterile Neutrinos





Effective SBL Oscillation Probabilities in 3+1 Schemes

$$P_{\nu_\alpha \rightarrow \nu_\beta}^{(-) \quad (-)} = \sin^2 2\vartheta_{\alpha\beta} \sin^2 \left(\frac{\Delta m_{41}^2 L}{4E} \right)$$

$$\sin^2 2\vartheta_{\alpha\beta} = 4|U_{\alpha 4}|^2 |U_{\beta 4}|^2$$

$$P_{\nu_\alpha \rightarrow \nu_\alpha}^{(-) \quad (-)} = 1 - \sin^2 2\vartheta_{\alpha\alpha} \sin^2 \left(\frac{\Delta m_{41}^2 L}{4E} \right)$$

$$\sin^2 2\vartheta_{\alpha\alpha} = 4|U_{\alpha 4}|^2 (1 - |U_{\alpha 4}|^2)$$

Perturbation of 3ν Mixing: $|U_{e4}|^2 \ll 1$, $|U_{\mu 4}|^2 \ll 1$, $|U_{\tau 4}|^2 \ll 1$, $|U_{s4}|^2 \simeq 1$

$$U = \begin{pmatrix} U_{e1} & U_{e2} & U_{e3} & U_{e4} \\ U_{\mu 1} & U_{\mu 2} & U_{\mu 3} & U_{\mu 4} \\ U_{\tau 1} & U_{\tau 2} & U_{\tau 3} & U_{\tau 4} \\ U_{s1} & U_{s2} & U_{s3} & U_{s4} \end{pmatrix}$$

- ▶ 6 mixing angles
- ▶ 3 Dirac CP phases
- ▶ 3 Majorana CP phases

↑
SBL

but CP violation is not observable
in SBL experiments!

Effective SBL Oscillation Probabilities in 3+2 Schemes

$$\phi_{kj} = \Delta m_{kj}^2 L / 4E$$

$$\eta = \arg[U_{e4}^* U_{\mu 4} U_{e5} U_{\mu 5}^*]$$

$$P_{\nu_{\mu} \rightarrow \nu_e}^{(-) \quad (-)} = 4|U_{e4}|^2 |U_{\mu 4}|^2 \sin^2 \phi_{41} + 4|U_{e5}|^2 |U_{\mu 5}|^2 \sin^2 \phi_{51} \\ + 8|U_{\mu 4} U_{e4} U_{\mu 5} U_{e5}| \sin \phi_{41} \sin \phi_{51} \cos(\phi_{54} \overset{(+)}{-} \eta)$$

$$P_{\nu_{\alpha} \rightarrow \nu_{\alpha}}^{(-) \quad (-)} = 1 - 4(1 - |U_{\alpha 4}|^2 - |U_{\alpha 5}|^2)(|U_{\alpha 4}|^2 \sin^2 \phi_{41} + |U_{\alpha 5}|^2 \sin^2 \phi_{51}) \\ - 4|U_{\alpha 4}|^2 |U_{\alpha 5}|^2 \sin^2 \phi_{54}$$

[Sorel, Conrad, Shaevitz, PRD 70 (2004) 073004; Maltoni, Schwetz, PRD 76 (2007) 093005; Karagiorgi et al, PRD 80 (2009) 073001; Kopp, Maltoni, Schwetz, PRL 107 (2011) 091801; Giunti, Laveder, PRD 84 (2011) 073008; Donini et al, JHEP 07 (2012) 161; Archidiacono et al, PRD 86 (2012) 065028; Conrad et al, AHEP 2013 (2013) 163897; Archidiacono et al, PRD 87 (2013) 125034; Kopp, Machado, Maltoni, Schwetz, JHEP 1305 (2013) 050; Giunti, Laveder, Y.F. Li, H.W. Long, PRD 88 (2013) 073008; Girardi, Meroni, Petcov, JHEP 1311 (2013) 146]

▶ Good: CP violation

▶ Bad: Two massive sterile neutrinos at the eV scale!

4 more parameters: $\underbrace{\Delta m_{41}^2, |U_{e4}|^2, |U_{\mu 4}|^2, \Delta m_{51}^2, |U_{e5}|^2, |U_{\mu 5}|^2, \eta}_{3+1}$

3+1: Appearance vs Disappearance

- ▶ ν_e disappearance experiments:

$$\sin^2 2\vartheta_{ee} = 4|U_{e4}|^2 (1 - |U_{e4}|^2) \simeq 4|U_{e4}|^2$$

- ▶ ν_μ disappearance experiments:

$$\sin^2 2\vartheta_{\mu\mu} = 4|U_{\mu4}|^2 (1 - |U_{\mu4}|^2) \simeq 4|U_{\mu4}|^2$$

- ▶ $\nu_\mu \rightarrow \nu_e$ experiments:

$$\sin^2 2\vartheta_{e\mu} = 4|U_{e4}|^2|U_{\mu4}|^2 \simeq \frac{1}{4} \sin^2 2\vartheta_{ee} \sin^2 2\vartheta_{\mu\mu}$$

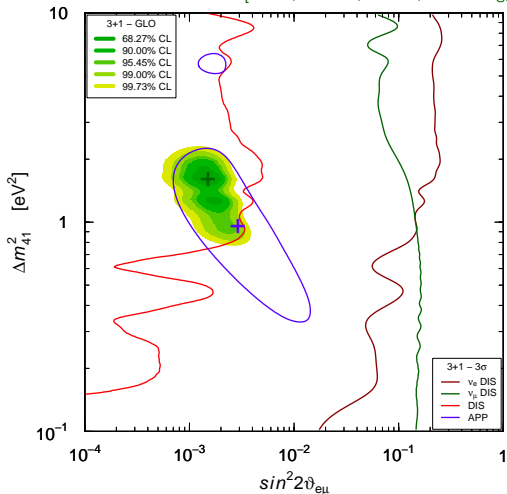
- ▶ Upper bounds on $\sin^2 2\vartheta_{ee}$ and $\sin^2 2\vartheta_{\mu\mu} \implies$ strong limit on $\sin^2 2\vartheta_{e\mu}$

[Okada, Yasuda, IJMPA 12 (1997) 3669-3694]

[Bilenky, Giunti, Grimus, EPJC 1 (1998) 247]

3+1 Global Fit

[Giunti, Laveder, Y.F. Li, H.W. Long, PRD 88 (2013) 073008]



MiniBooNE $E > 475$ MeV
GoF = 29% PGoF = 9%

- ▶ APP $\nu_\mu \rightarrow \nu_e$ & $\bar{\nu}_\mu \rightarrow \bar{\nu}_e$:
LSND (Y), MiniBooNE (?),
OPERA (N), ICARUS (N),
KARMEN (N), NOMAD (N),
BNL-E776 (N)
- ▶ DIS ν_e & $\bar{\nu}_e$: Reactors (Y),
Gallium (Y), $\nu_e C$ (N),
Solar (N)
- ▶ DIS ν_μ & $\bar{\nu}_\mu$: CDHSW (N),
MINOS (N),
Atmospheric (N),
MiniBooNE/SciBooNE (N)

No Osc. excluded at 6.2σ
 $\Delta\chi^2/\text{NDF} = 46.2/3$

[different approach and conclusions: Kopp, Machado, Maltoni, Schwetz, JHEP 1305 (2013) 050]

Goodness of Fit

- ▶ Assumption or approximation: Gaussian uncertainties and linear model
- ▶ χ_{\min}^2 has χ^2 distribution with Number of Degrees of Freedom

$$\text{NDF} = N_D - N_P$$

N_D = Number of Data N_P = Number of Fitted Parameters

- ▶ $\langle \chi_{\min}^2 \rangle = \text{NDF}$ $\text{Var}(\chi_{\min}^2) = 2\text{NDF}$

- ▶ $\text{GoF} = \int_{\chi_{\min}^2}^{\infty} p_{\chi^2}(z, \text{NDF}) dz$ $p_{\chi^2}(z, n) = \frac{z^{n/2-1} e^{-z/2}}{2^{n/2} \Gamma(n/2)}$

Parameter Goodness of Fit

Maltoni, Schwetz, PRD 68 (2003) 033020, arXiv:hep-ph/0304176

- ▶ Measure compatibility of two (or more) sets of data points A and B under fitting model

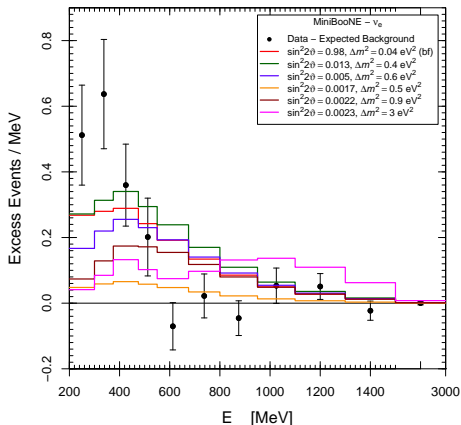
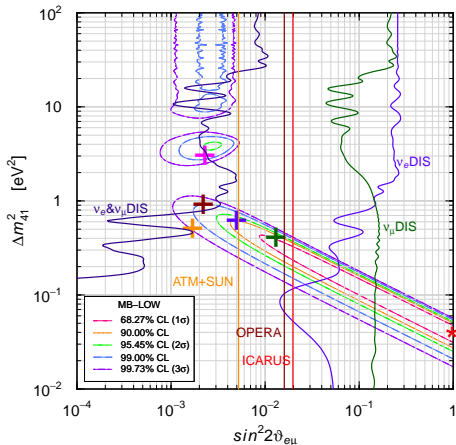
- ▶ $\chi_{\text{PGoF}}^2 = (\chi_{\min}^2)_{A+B} - [(\chi_{\min}^2)_A + (\chi_{\min}^2)_B]$

- ▶ χ_{PGoF}^2 has χ^2 distribution with Number of Degrees of Freedom

$$\text{NDF}_{\text{PGoF}} = N_P^A + N_P^B - N_P^{A+B}$$

- ▶ $\text{PGoF} = \int_{\chi_{\text{PGoF}}^2}^{\infty} p_{\chi^2}(z, \text{NDF}_{\text{PGoF}}) dz$

MiniBooNE Low-Energy Excess?

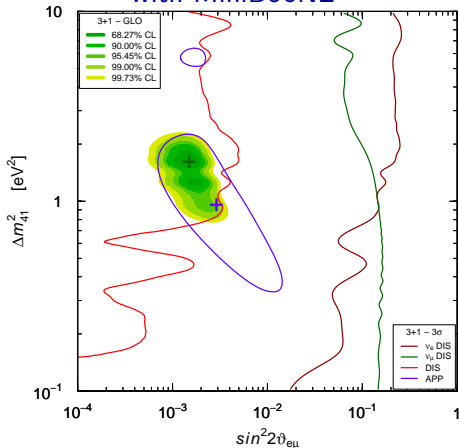


- ▶ No fit of low-energy excess for realistic $\sin^2 2\vartheta_{e\mu} \lesssim 5 \times 10^{-3}$
- ▶ APP-DIS PGoF = 0.1%
- ▶ Neutrino energy reconstruction problem?

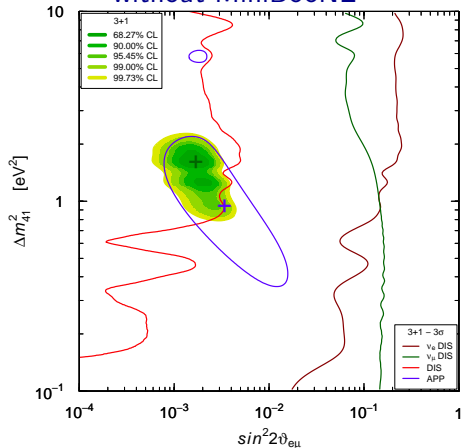
[Martini, Ericson, Chanfray, PRD 85 (2012) 093012; PRD 87 (2013) 013009]

MiniBooNE Impact on SBL Oscillations?

with MiniBooNE



without MiniBooNE



GoF = 29% PGoF = 9%

No Osc. excluded at 6.2 σ

$\Delta\chi^2/\text{NDF} = 46.2/3$

GoF = 19% PGoF = 8%

No Osc. excluded at 6.3 σ

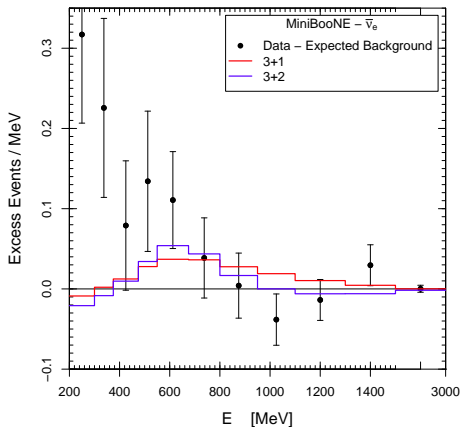
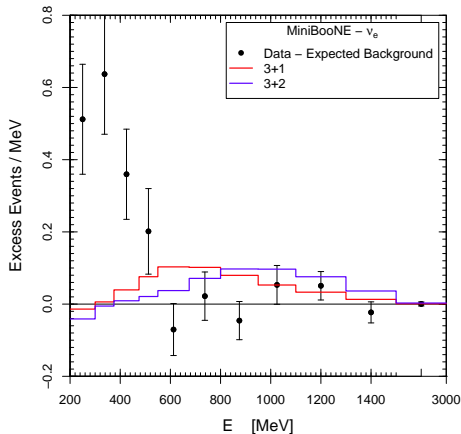
$\Delta\chi^2/\text{NDF} = 47.1/3$

Without LSND: No Osc. excluded only at 2.1 σ ($\Delta\chi^2/\text{NDF} = 8.3/3$)

3+2

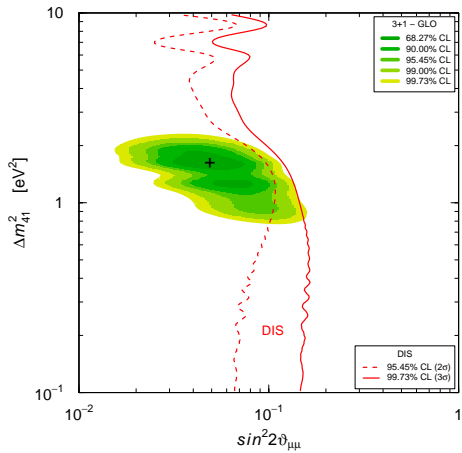
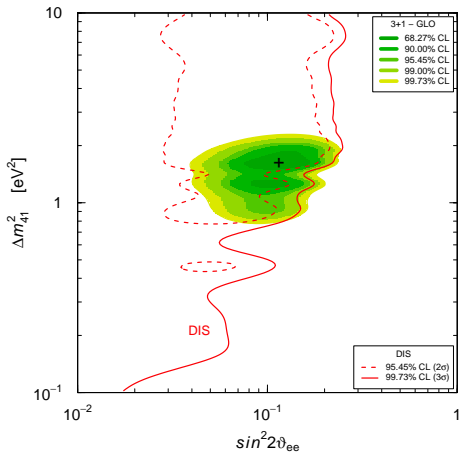
- ▶ $3+2$ should be preferred to $3+1$ only if
 - ▶ there is evidence of two peaks of the probability corresponding to two Δm^2 's
 - or
 - ▶ there is CP-violating difference of $\nu_\mu \rightarrow \nu_e$ and $\bar{\nu}_\mu \rightarrow \bar{\nu}_e$ transitions
- ▶ 2008 ν + 2010 $\bar{\nu}$ MiniBooNE data indicated $\nu-\bar{\nu}$ difference
 - ⇓
 - reasonable and useful to consider $3+2$
- ▶ $\nu-\bar{\nu}$ difference almost disappeared with 2012 $\bar{\nu}$ data
- ▶ Okkam razor: $3+1$ is enough!
- ▶ Different approach and conclusions:
 - ▶ Kopp, Machado, Maltoni, Schwetz, JHEP 1305 (2013) 050:
Use all MiniBooNE data. No $3+1$ global fit. $3+2$ slightly preferred? Small allowed region.
 - ▶ Conrad, Ignarra, Karagiorgi, Shaevitz, Spitz, AHEP 2013 (2013) 163897:
Use all MiniBooNE data. $3+2$ strongly preferred. Very small allowed regions.

MiniBooNE Low-Energy Excess?



- ▶ 3+1: GoF = 6% PGoF = 0.2%
- ▶ 3+2: GoF = 8% PGoF = 0.1%

ν_e and ν_μ Disappearance



Many Exciting New Experiments and Projects

- ▶ Reactor $\bar{\nu}_e$ Disappearance:
 - ▶ Nucifer (OSIRIS, Saclay), Stereo (ILL, Grenoble) [arXiv:1204.5379]
 - ▶ DANSS (Kalinin Nuclear Power Plant, Russia) [arXiv:1304.3696], POSEIDON (PIK, Gatchina, Russia) [arXiv:1204.2449]
 - ▶ SCRAAM (San Onofre, California) [arXiv:1204.5379]
 - ▶ CARR (China Advanced Research Reactor) [arXiv:1303.0607]
 - ▶ Neutrino-4 (SM-3, Dimitrovgrad, Russia), SOLID (BR2, Belgium), Hanaro (Korea) [D. Lhuillier, EPSHEP 2013]
- ▶ Radioactive Source ν_e and $\bar{\nu}_e$ Disappearance:
 - ▶ SOX (Borexino, Gran Sasso, Italy) [arXiv:1304.7721]
 - ▶ CeLAND (^{144}Ce @KamLAND, Japan) [arXiv:1107.2335]
 - ▶ SAGE (Baksan, Russia) [arXiv:1006.2103]
 - ▶ IsoDAR (DAE δ ALUS, USA) [arXiv:1210.4454, arXiv:1307.2949]
 - ▶ SNO+, Daya Bay, RENO [T. Lasserre, Neutrino 2012]
- ▶ Accelerator $\bar{\nu}_\mu \rightarrow \bar{\nu}_e$ Appearance:
 - ▶ ICARUS/NESSIE (CERN) [arXiv:1304.2047, arXiv:1306.3455]
 - ▶ nuSTORM [arXiv:1308.0494]
 - ▶ OscSNS (Oak Ridge, USA) [arXiv:1305.4189, arXiv:1307.7097]

Effects of light sterile neutrinos can be also seen in:

▶ Solar neutrinos

[Dooling et al, PRD 61 (2000) 073011, Gonzalez-Garcia et al, PRD 62 (2000) 013005; Palazzo, PRD 83 (2011) 113013, PRD 85 (2012) 077301; Li et al, PRD 80 (2009) 113007, PRD 87, 113004 (2013), JHEP 1308 (2013) 056; Kopp, Machado, Maltoni, Schwetz, JHEP 1305 (2013) 050]

▶ Atmospheric neutrinos

[Goswami, PRD 55 (1997) 2931; Bilenky, Giunti, Grimus, Schwetz, PRD 60 (1999) 073007; Maltoni, Schwetz, Tortola, Valle, NPB 643 (2002) 321, PRD 67 (2003) 013011; Choubey, JHEP 12 (2007) 014; Razzaque, Smirnov, JHEP 07 (2011) 084, PRD 85 (2012) 093010; Gandhi, Ghoshal, PRD 86 (2012) 037301; Esmaili, Halzen, Peres, JCAP 1211 (2012) 041; Esmaili, Smirnov, arXiv:1307.6824]

▶ Supernova neutrinos

[Caldwell, Fuller, Qian, PRD 61 (2000) 123005; Peres, Smirnov, NPB 599 (2001); Sorel, Conrad, PRD 66 (2002) 033009; Tamborra, Raffelt, Huedepohl, Janka, JCAP 1201 (2012) 013; Wu, Fischer, Martinez-Pinedo, Qian, arXiv:1305.2382]

Conclusions

- ▶ Robust Three-Neutrino Mixing Paradigm.

Open problems: $\vartheta_{23} \stackrel{?}{\lesseqgtr} 45^\circ$, Mass Hierarchy, CP Violation, Absolute Mass Scale, Dirac or Majorana?

- ▶ Very interesting indications of light sterile neutrinos with $m_s \approx 1$ eV:
 - ▶ LSND $\bar{\nu}_\mu \rightarrow \bar{\nu}_e$ signal.
 - ▶ Reactor $\bar{\nu}_e$ disappearance.
 - ▶ Gallium ν_e disappearance.
- ▶ Many promising projects to test in a few years short-baseline ν_e and $\bar{\nu}_e$ disappearance with reactors and radioactive sources.
- ▶ More difficult (expensive) projects to check the LSND $\bar{\nu}_\mu \rightarrow \bar{\nu}_e$ signal are under discussion.
- ▶ Cosmology:
 - ▶ Important effects of sterile neutrinos.
 - ▶ Implications depend on theoretical framework and considered data set.
 - ▶ Cosmological indications must be checked by laboratory experiments.