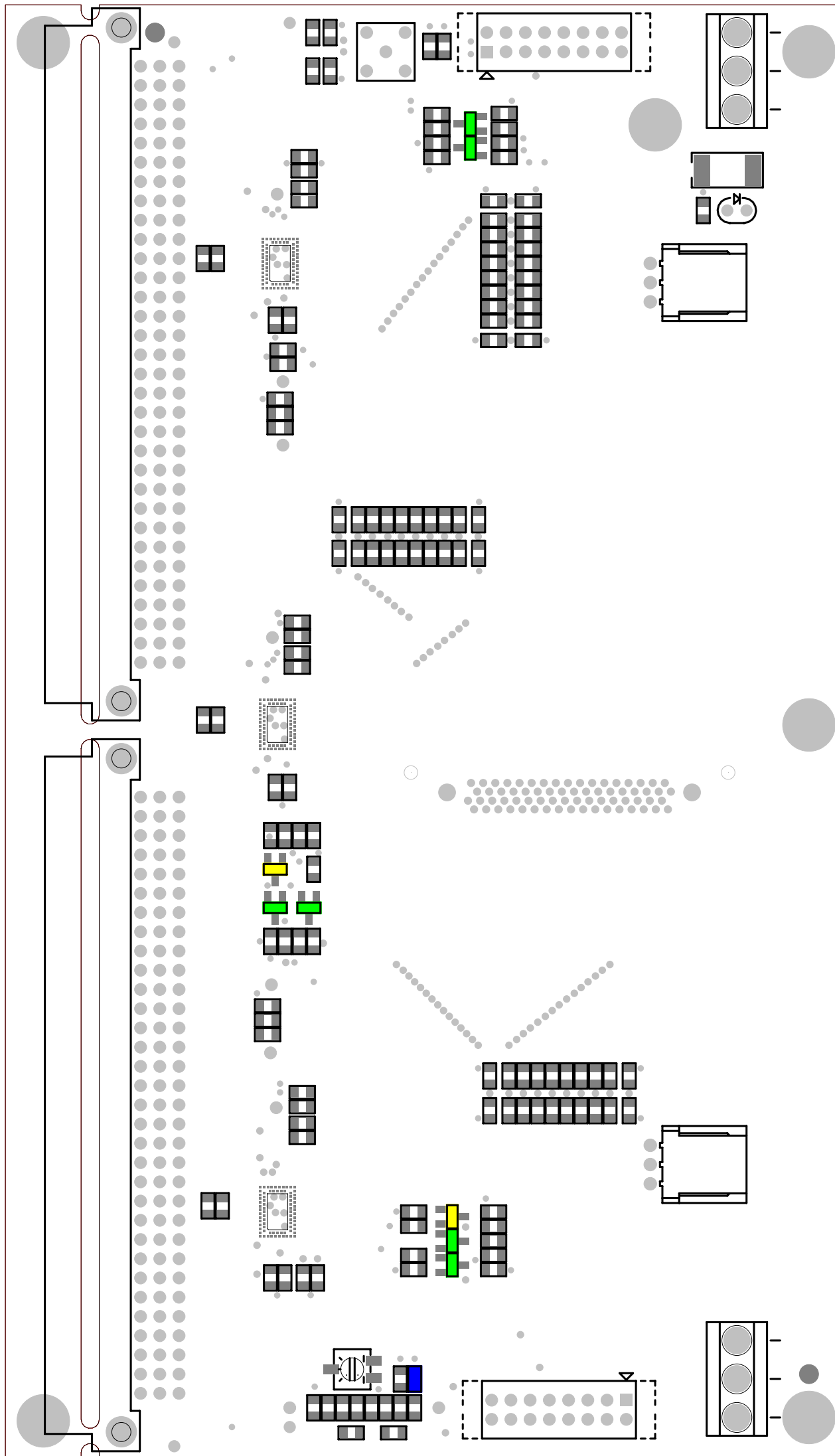
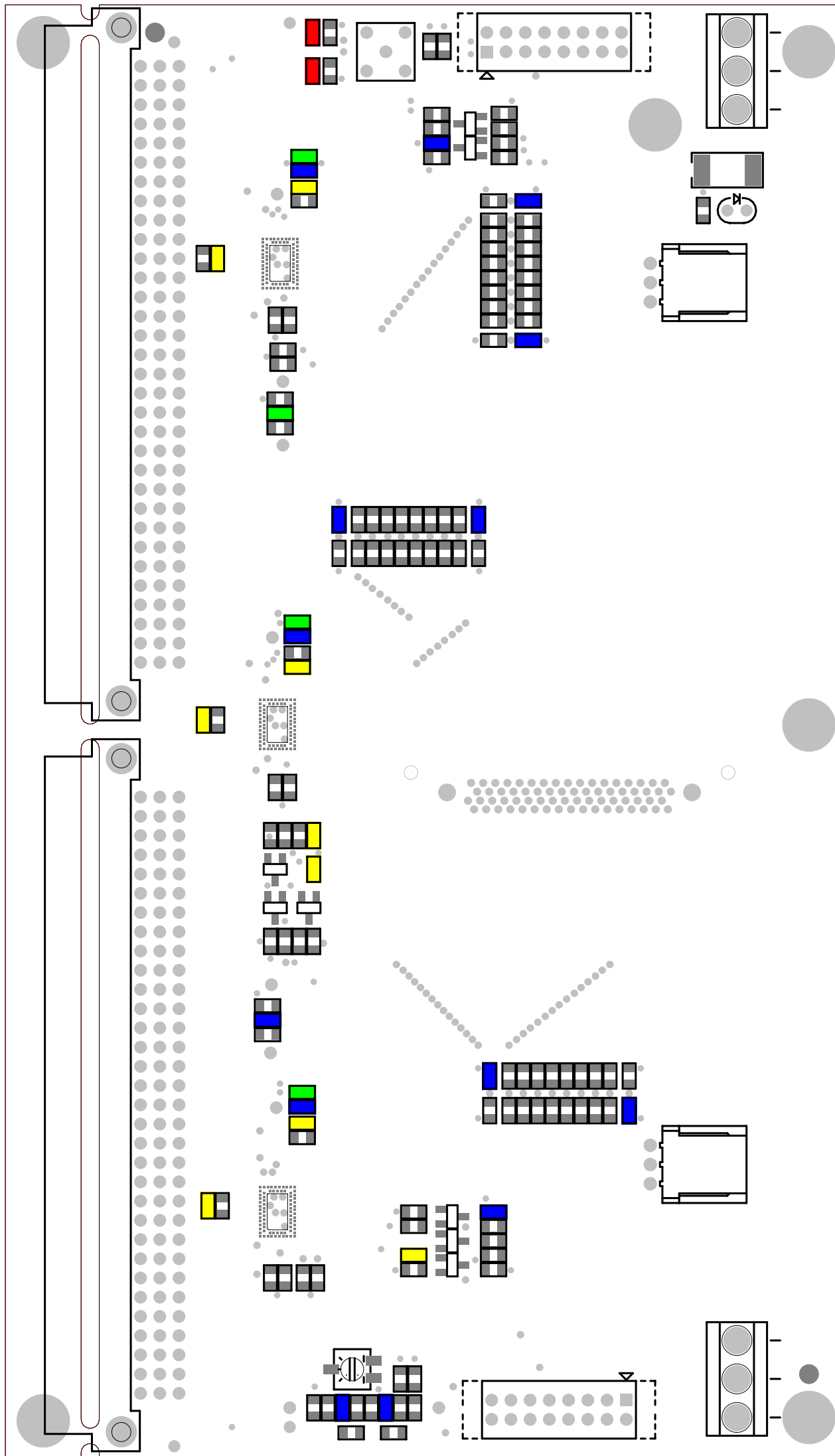


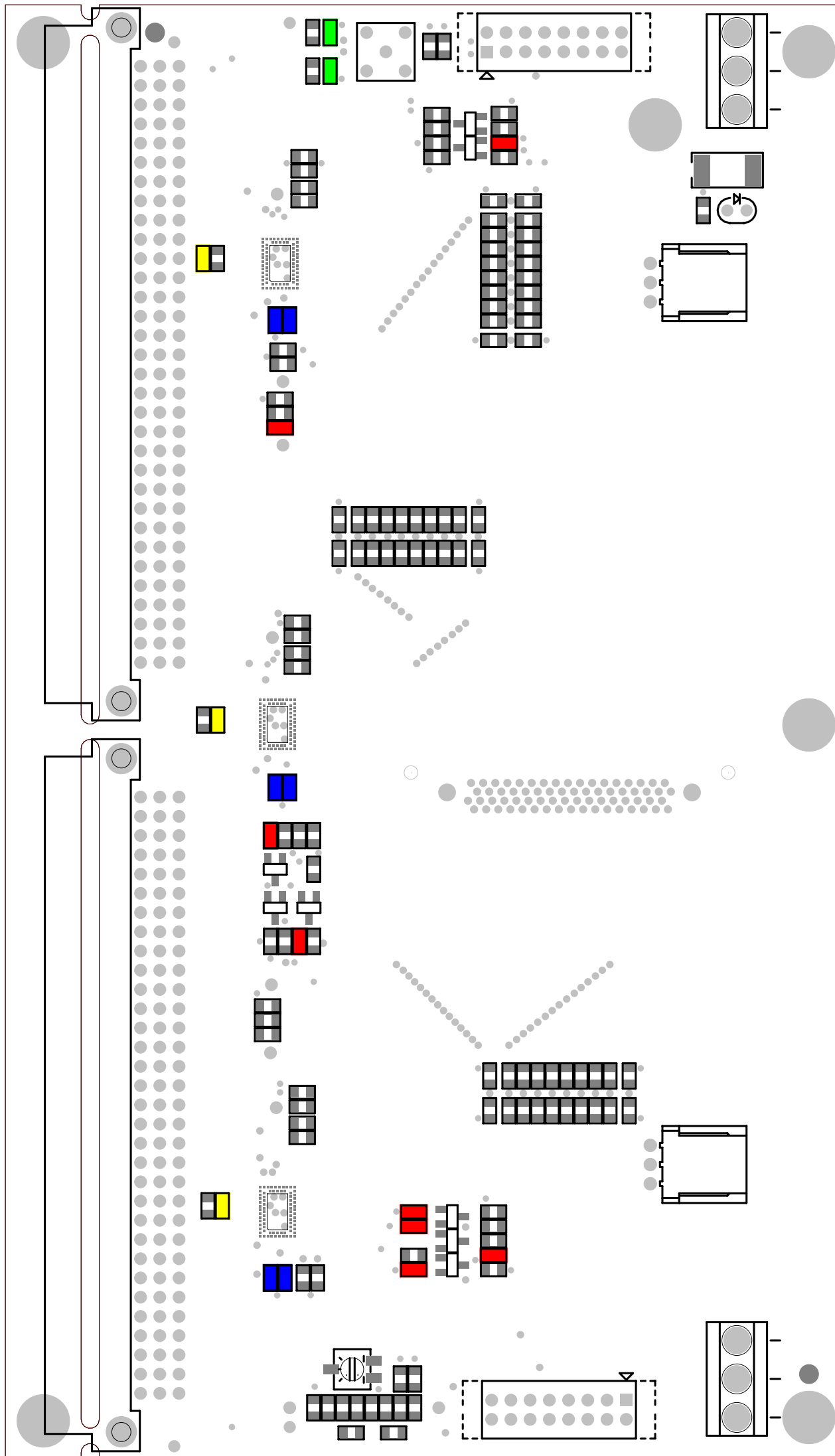
Reference Designator	Qty	Description	Val	FIL	Outline
TG1-TG2	2			MIRE-SM-ROUND-254X254	
T1-T6	6	NPN 5GHz WIDEBAND TRANSISTOR		BFR92A	SOT23
D1-D2	2	DUAL SERIES SILICON SWITCHING DIODE		BAU99	SOT23
R111	1	0.125W 1% THIN-FILM CHIP RESISTOR	3k	R0805-3K-1%-CR2A3K0FT	R0805



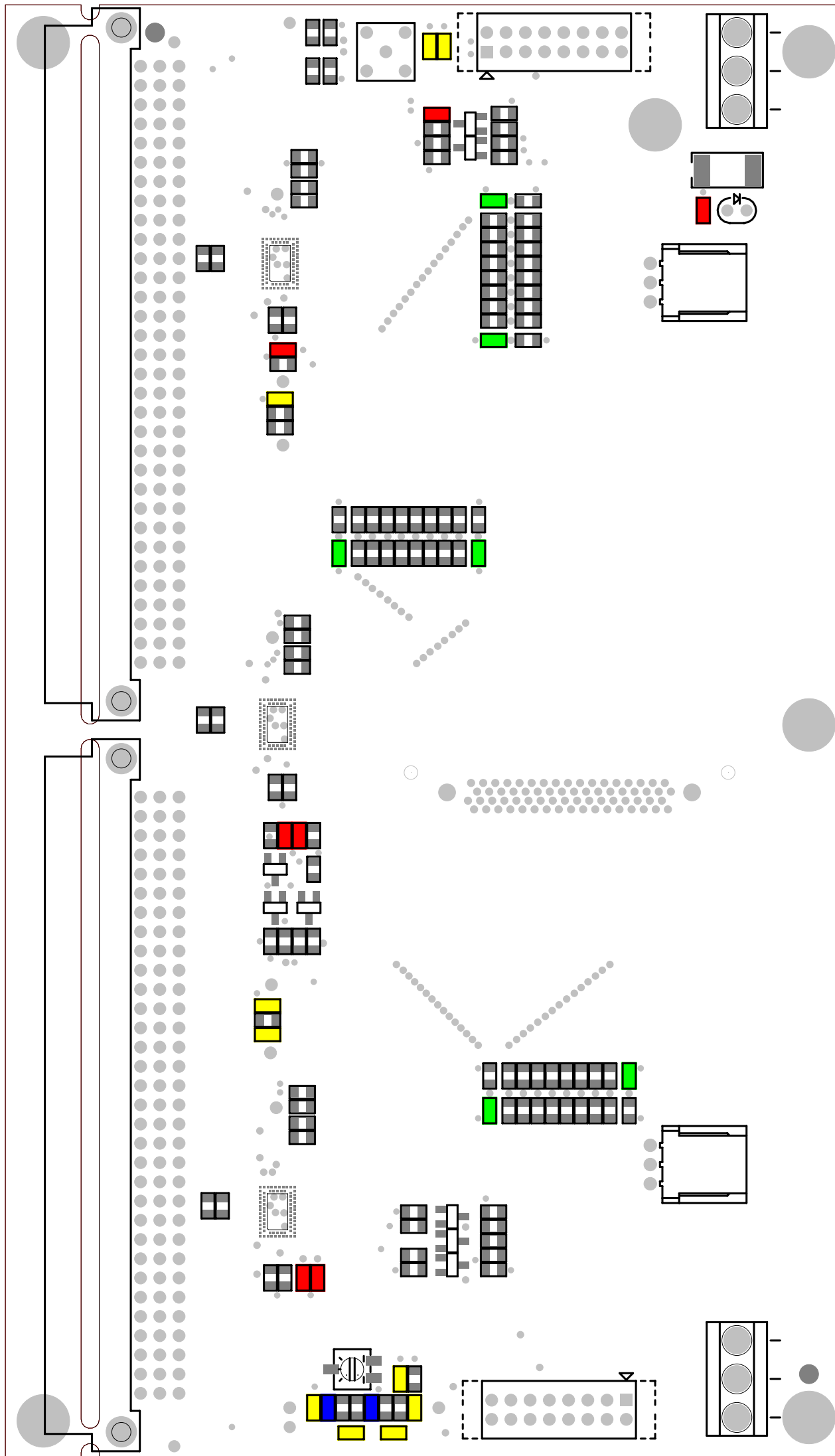
Reference Designator	Qty	Description	Val	FIL	Outline
C1-C2	2		10PF	C0805-10PF/50U	
C4-C5,C26,C45	4	10% 50V X7R DIELECTRIC MULTILAYER CHIP CAPACITOR	100pF	C0805-100PF/50U	C0805
C7,C9,C13-C14, C19-C20,C28,C37,C42	9	10% 50V X7R DIELECTRIC MULTILAYER CHIP CAPACITOR	10nF	C0805-10NF/50U	C0805
C10-C11,C15-C18,C24, C27,C29,C33,C39-C41, C44	14	10% 50V X7R DIELECTRIC MULTILAYER CHIP CAPACITOR	100nF	C0805-100NF/50U	C0805



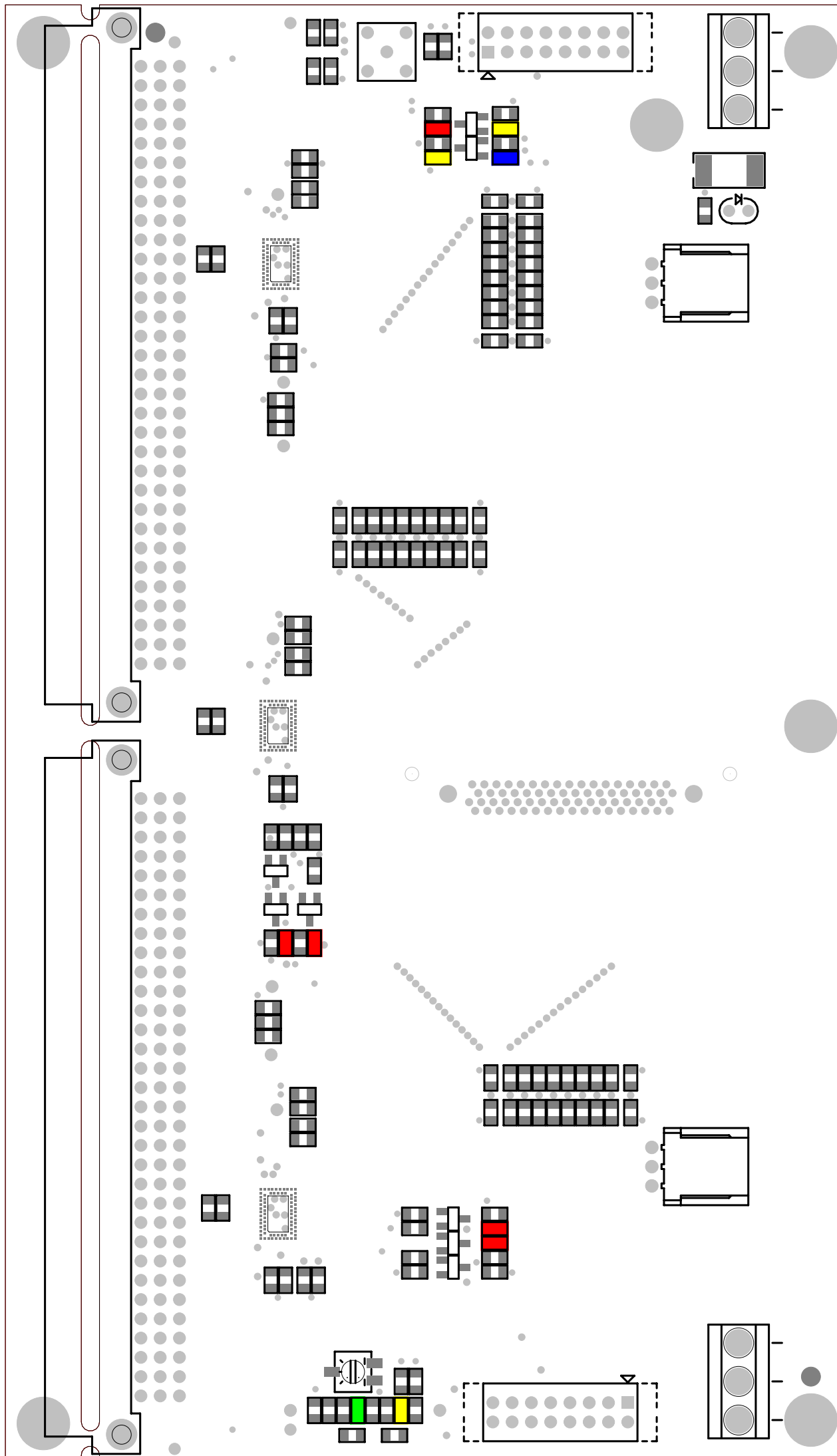
Reference Designator	Qty	Description	Val	FIL	Outline
C21-C22,C43,R132, R152-R153,R164,R169	8	0.125W 1% THIN-FILM CHIP RESISTOR	0R	R0805-0R-1%-CRG0805J0R	R0805
R1-R2	2		25R	R0805-25-1%-CR2A25RFT	
R35-R36,R118	3		27R	R0805-27-1%-CR2A27RFT	
R37-R38,R45-R46, R123-R124	6	0.125W 1% THIN-FILM CHIP RESISTOR	100k	R0805-100K-1%-CR2A100KFT	R0805



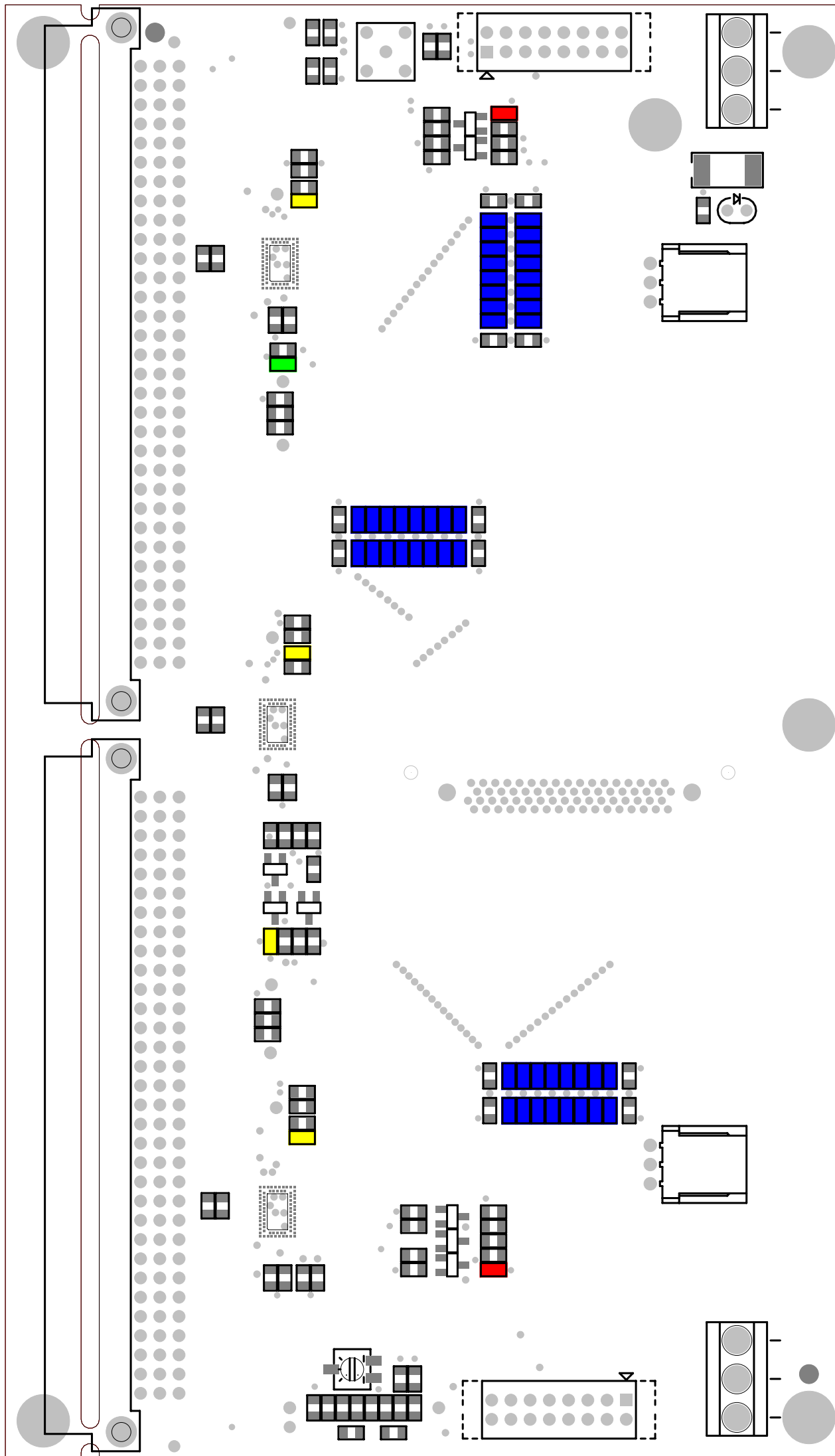
Reference Designator	Qty	Description	Val	FIL	Outline
R40-R42,R119,R128, R135-R136	7	0.125W 1% THIN-FILM CHIP RESISTOR	200	R0805-200-1%-CR2A200RFT	R0805
R51,R54-R55,R58, R140,R143	6	0.125W 1% THIN-FILM CHIP RESISTOR (Pb FREE)	10	R0805-10-1%-RC0805FR07	R0805
R112-R113,R125,R133, R139,R167,R172-R175	10	0.125W 1% THIN-FILM CHIP RESISTOR	1k	R0805-1K-1%-CR2A1KFT	R0805
R114,R121	2	0.125W 1% THIN-FILM CHIP RESISTOR	1k 8	R0805-1K8-1%-CR2A1K8FT	R0805



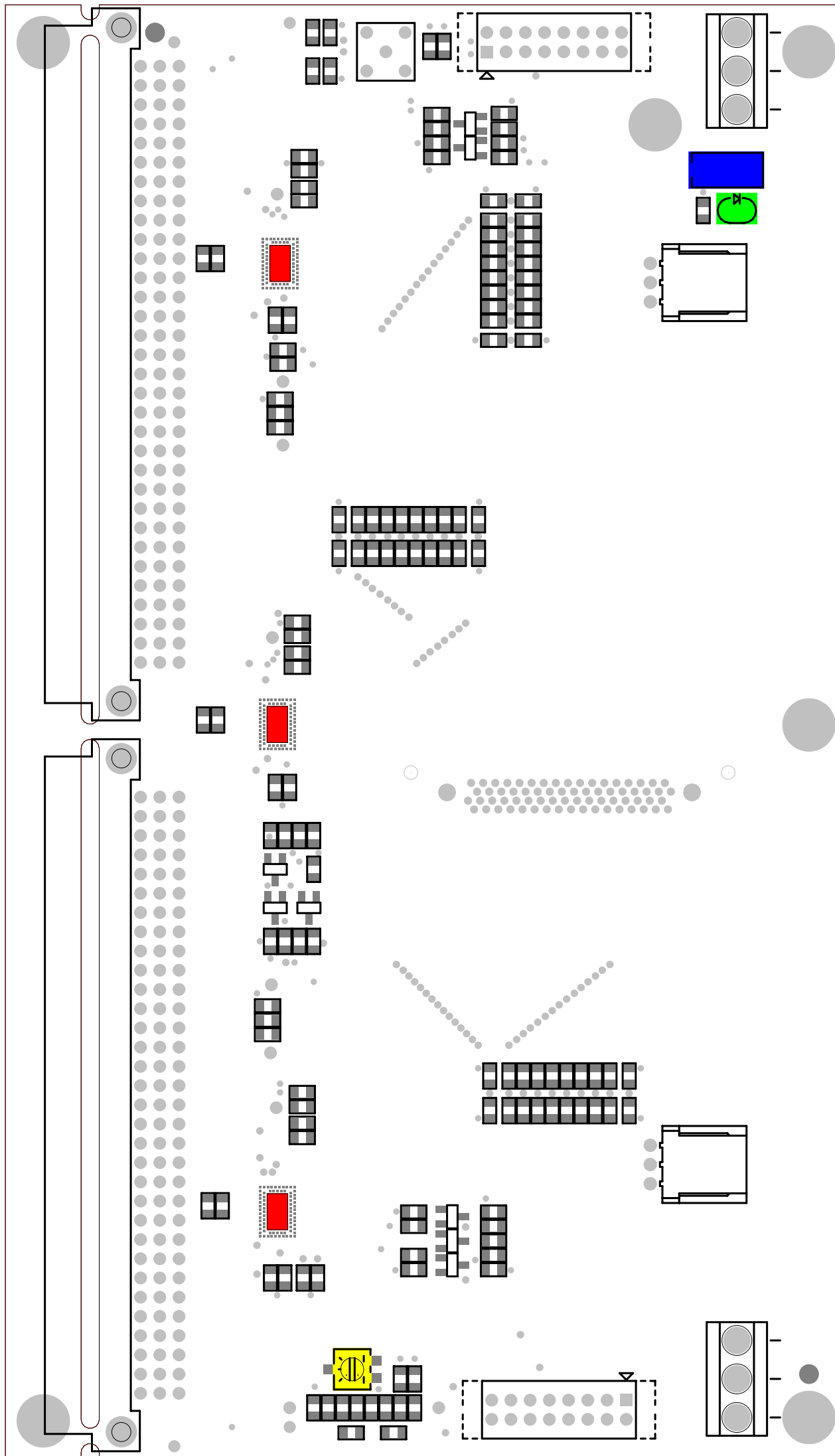
Reference Designator	Qty	Description	Val	FIL	Outline
R115,R117,R130,R165, R168	5	0.125W 1% THIN-FILM CHIP RESISTOR	51	R0805-51-1%-CR2A51RFT	R0805
R120	1	0.125W 1% THIN-FILM CHIP RESISTOR (Pb FREE)	910	R0805-910-1%-RC0805FR07	R0805
R122,R126,R134	3	0.125W 1% THIN-FILM CHIP RESISTOR	5k1	R0805-5K1-1%-CR2A5K1FT	R0805
R127	1	0.125W 1% THIN-FILM CHIP RESISTOR	100	R0805-100-1%-CR2A100RFT	R0805



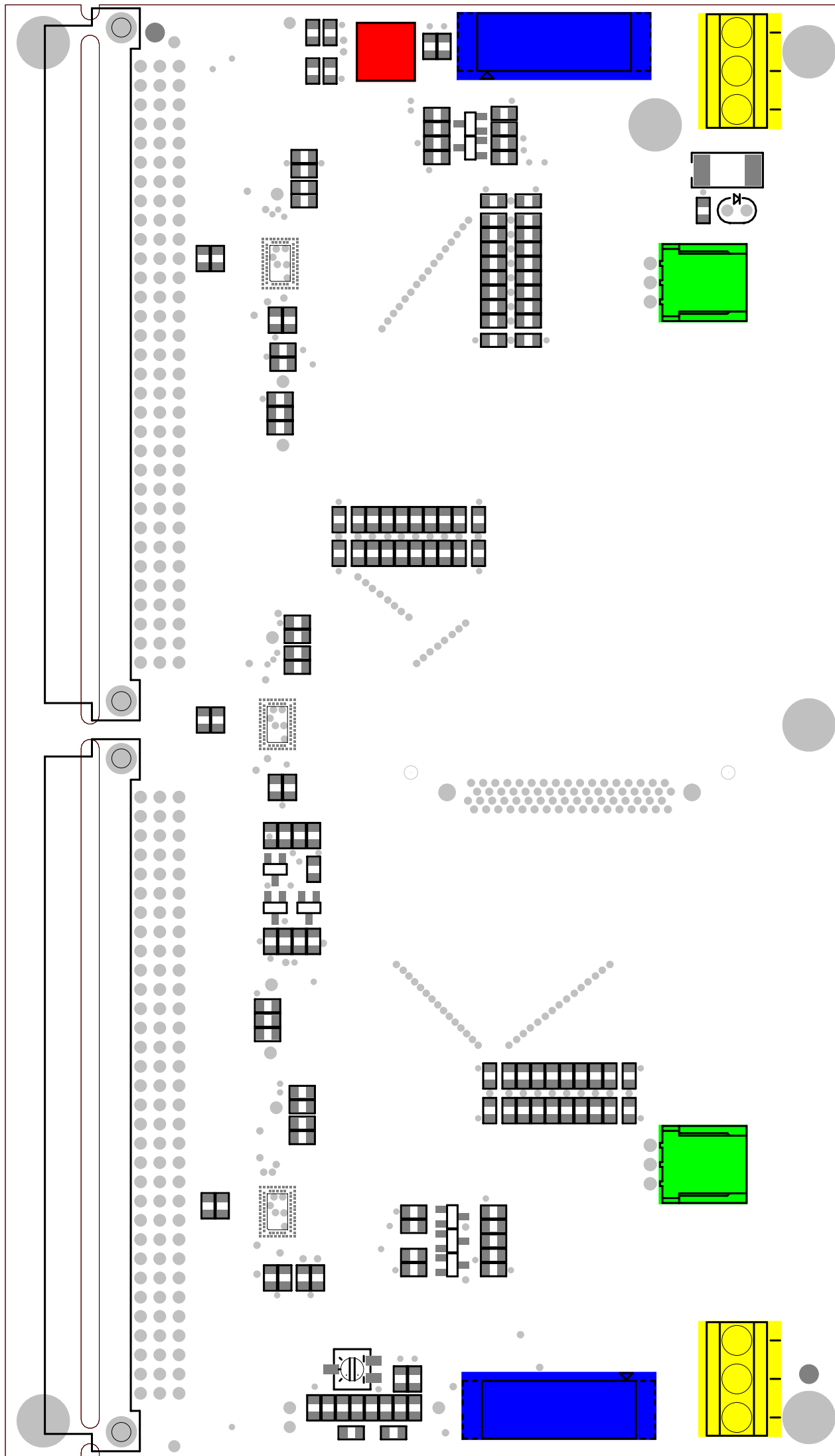
Reference Designator	Qty	Description	Val	FIL	Outline
R129,R166	2	0.125W 1% THIN-FILM CHIP RESISTOR	75	R0805-75R-1%-CR2A75RFT	R0805
R39	1		39R	R0805-39-1%-CR2A39RFT	
R43-R44,R116,R131	4		150R	R0805-150-1%-CR2A150RFT	
R47-R50,R52-R53, R56-R57,R59-R62, R64-R65,R68-R69, R71-R74,R76-R77, R80-R81,R83-R86, R88-R89,R92-R93, R107-R138,R141-R142, R144-R145,R147-R148, R150-R151,R155-R156, R158-R159,R161-R162	48		240R	R0805-240R-1%-CR2A240RFT	



Reference Designator	Qty	Description	Val	FIL	Outline
U1-U3	3			NINDASIC8-76N	
LD1	1	3MM RED LED		LED-R-3MM-HP	LED-D3
P1	1	1T 0.25W 20% CERMET SEALED SMD POTENTIOMETER	10k	PSM025W-1T-10K	BI-TECHNO-23B
C38	1	SMD TANTALUM ELECTROLYTIC CAPACITOR	47uF/10V	CMS-CTD47UF	CMS-CTD



Reference Designator	Qty	Description	Val	FIL	Outline
J1	1	CONNECT. LEMO. 00.50ohms. DROITE. CI		LEMO-00-50-D	46111842
J9-J10	2	CONNECTING TERMINAL FOR 1.5mm CABLE DIAMETER		TYCO-3 -- MC	BORNIER-3POLES
J6-J7	2	CONNECTING TERMINAL FOR 1.5mm CABLE DIAMETER		BORNIER-3POLES	BORNIER-3POLES
J5, J8	2	2x8 CONTACTS .100 x .100\ HEADER THROUGH HOLE VERTICAL MOUNT		CP-16P-M-D	CP-16P-M-D



Reference Designator	Qty	Description	Ual	FIL	Outline
J2-J3	2	96 ABC PINS RIGHT ANGLED MALE CONNECTOR TYPE C		CON96-ABC-M-C	61333157

